



## Mazda MX-5 Cup Car Technical Service Bulletin #2026-04-13

### Mazda MX-5 Cup Car Side Door Impact Inserts - RECOMMENDED

**This TSB describes:** The installation of the Side Door Impact Inserts on Mazda MX-5 Cup Cars. The Side Door Impact Inserts are additional safety components designed to absorb energy during side impacts. The Side Door Impact Inserts are not required at this time but are highly recommended.

**Important Notes:** No other modifications, substitutions, or additions to the door structure or inserts are not allowed unless authorized in future TSB's or homologation documents.

**This installation requires attention to detail and carries a risk of damaging the door skin or other components if not preformed carefully.**

## Mazda MX-5 Cup Side Door Impact Insert Installation Instructions

### 1.0 General:

- Driver Side Door Impact Insert Kit - Part# 0000-08-5075-LT
- Passenger Side Door Impact Kit - Part# 0000-08-5075-RT
- Door Impact Insert Complete Kit - Part# 0000-08-5075-KT

**1.1 Safety:** Follow all industry standards or shop safety procedures.

**1.2 Intended use:** This guide is intended to be used for installation of the Side Door Impact Inserts on a Mazda MX-5 Cup car.

**1.3 Basic Installation Overview and Notes:** The Side Door Impact Inserts are additional safety items that are for absorbing energy during side impacts.

***This installation does need extra attention to detail and could cause damage to other parts.***

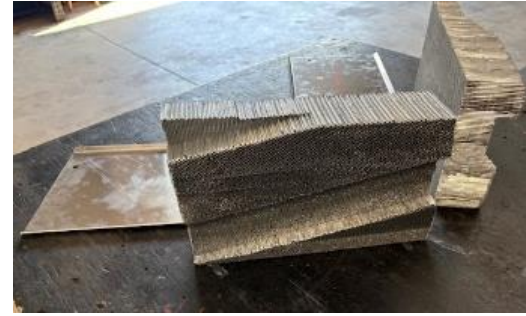
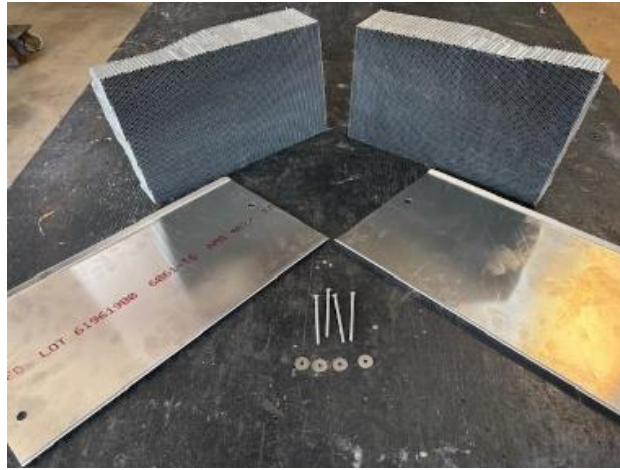
### 1.4 Tools and Supplies:

- 1" Tape
- Drill
- ½" Transfer punch
- 10-32" UNF Tap
- Tap handle
- #21 Drill bit = 0.159" Hole Diameter
- #2 Phillips screwdriver



## 1.5 Side Door Impact Insert Kit Includes:

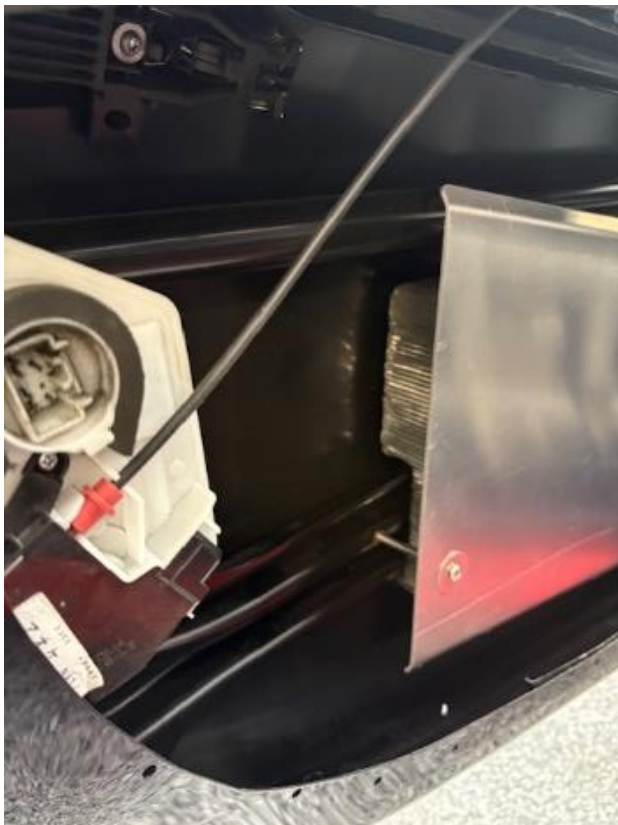
- 1x Right Door Impact Insert
- 1x Right Door Impact Plate
- 1x Left Door Impact Insert
- 1x Left Door Impact Plate
- 4x 10-32"x3" Phillips Screws
- 4x #10 Washers



## 2.0 Installation of Side Door Impact Inserts

**Step 1.** When door is closed, reach inside door pocket and tape a vertical reference line on the inner door skin, perpendicular to the most rearward door bar of the roll cage.

**Step 2.** Open door and insert Door Impact Insert forward of the tape line. Afterwards, place the Door Impact Plate over the Door Impact Insert and center it from front to back and top to bottom. Now, close the door slowly and make sure you have clearance from the Door Impact Plate to the door bars. ***(NOTE: ON SOME CARS THE DOOR IMPACT INSERT MAY NEED MODIFICATION TO FIT PROPERLY)*** After centering, use the 1/2" transfer punch through the Door Impact Plate and align it with the center rib of the factory door bar. (This is where you will drill and tap your holes).

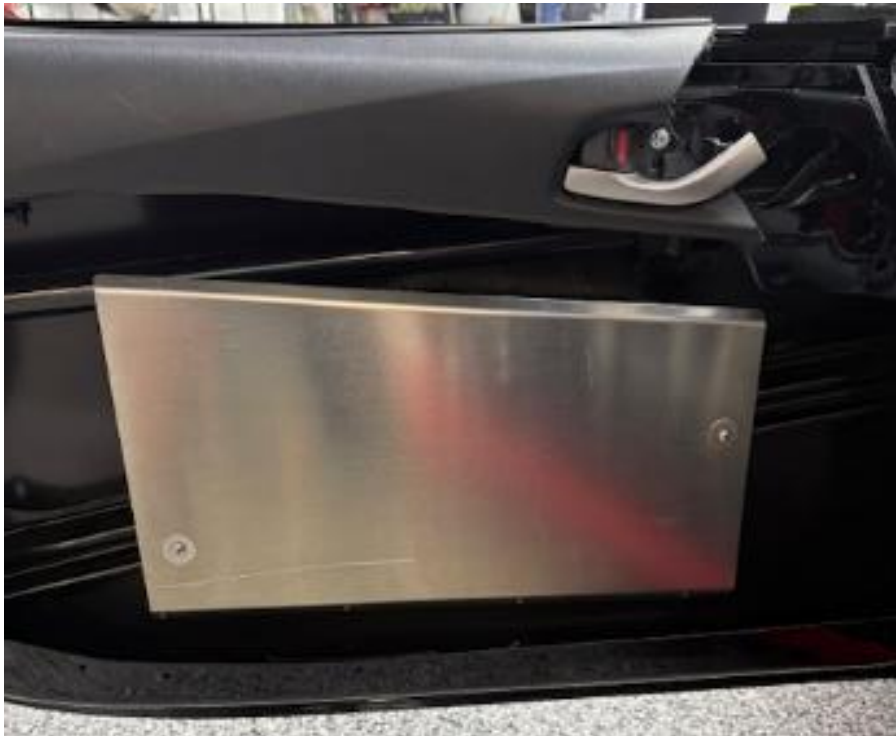


**Step 3.** Remove Door Impact Plate and Door Impact Insert.

**Step 4.** Using a #21 drill bit, drill your holes where you transfer punched the center rib. **(CAUTION: MAKE SURE YOU ONLY DRILL THROUGH THE RIB WITHOUT HITTING THE DOOR SKIN)**

**Step 5.** Tap the holes using the 10-32" tap **(CAUTION: MAKE SURE YOU ONLY TAP THROUGH THE RIB WITHOUT HITTING THE DOOR SKIN)**

**Step 6.** Reinstall Door Impact Insert and Door Impact Plate using the 3"x10-32" Phillips screws and washers to fasten the door plate to the center rib. **(CAUTION: MAKE SURE YOUR DO NOT OVER TIGHTEN SCREWS. IT WILL CASUE DAMAGE TO THE DOOR SKIN)** The screws should only lightly compress the door plate to hold the insert securely in place.



**Step 7.** Verify the door opens and closes freely with full clearance to the roll cage. Confirm the insert is secure and does not shift. Finish

Please reach out directly to Flis Performance for purchase. If you have any questions, please contact us at the information below:

Ashli Richardson



☎ 386-256-7021

✉ ASHLI@FLISPERFORMANCE.COM

🌐 WWW.FLISPERFORMANCE.COM

📍 108 ANITA AVE  
DAYTONA BEACH, FL  
32114

WHELEN  
MAZDA  
MX-5 CUP

PRESENTED BY: MICHELIN

MAZDA  
MOTORSPORTS  
HERITAGE COLLECTION