

# ND.2 Mazda MX-5 Cup Homologation Document

Version #19 2025.04.02



Flis Performance, LLC  
106 Anita Ave • Daytona, FL 32114  
(386)-256-7021  
[www.FlisPerformance.com](http://www.FlisPerformance.com)

## Contents:

ND.2 Mazda MX-5 Cup Homologation Document.....	1
1) General Notes: .....	3
2) Body .....	4
3) Brakes .....	10
4) Cooling.....	13
5) Differential .....	17
6) Data .....	21
7) Electrical .....	22
8) Engine .....	26
9) Exhaust .....	28
10) Fluids .....	29
11) Fuel .....	31
12) Interior .....	32
13) Safety Equipment .....	34
14) Suspension and Suspension Bracing .....	36
15) Wheels & Tires .....	44
16) SADEV Gearbox.....	50
17) Transmission and Clutch .....	60

### 1) General Notes:

This document will be updated periodically to reflect cumulative changes made to the vehicle specification. A list of all vehicle updates can be found on the Flis Performance web site: <http://flisperformance.com/>

a) All REQUIRED TSB items are also shown in this document, as well as items that are OPTIONAL but still homologated. All parts on vehicle must be stock 2019+ Mazda MX-5 ND2 Chassis parts unless specifically listed in this document. Below is a list of all stock Mazda parts that are added during the assembly process:

- i) Air box Cowl - N244-56-35X
- ii) Sealed Differential - 0000-02-MS14-KT or 0000-02-MS14-SD (for SADEV)
- iii) Brake calipers - 0000-03-5423 - Please refer to ND2-TSB-2022-12-21 #A - Mazda MX-5 Cup Brembo Brake Package and PAGID Brake Pads - Required
- iv) Brake caliper pins - 0000-03-5423 - ND2-TSB-2022-12-21 #A - Mazda MX-5 Cup Brembo Brake Package and PAGID Brake Pads - Required
- v) 2016-2018 Flywheel-PEES-11-500
- vi) 2016-2018 Flywheel Lock Bolt-LF01-11-511
- vii) 2016-2018 Front Clutch Cover- PE01-16-220
- viii) Filter Body for Oil Filter- PEES-14-311
- ix) Oil Filter Body Gasket - PEES-14-1342
- x) Modified Stock Parts are shown in Section 18

b) The only allowed end user modifications to the car are installation of the following:

- i) FIA approved seat and seat side mounting brackets
- ii) FIA approved safety belts
- iii) Welding of additional brackets to the Shoulder Belt Bar for Safety Belt Attachment is no longer be allowed. Please reference ND2-TSB-2022-01-13 #C - Shoulder Belt Extension Bracket - Optional
- iv) Interior rear-view mirror
- v) Steering wheel

c) Allowable adjustments to the car are:

- i) Tire air pressure
- ii) Front anti-roll bar end link positions
- iii) Front and rear anti-roll bar end link lengths (Option of Disconnecting Sway Bars and method of securing components found in TSB #2022-01-13 #D)
- iv) Ride height and rake ( Per sanctioning organization ground clearance) via spring perches
- v) Damper compression and rebound
- vi) Front and rear toe
- vii) Front and rear camber
- viii) Caster

If it is not specifically listed above, no other adjustments, polishing, deburring, or modifications of any kind are allowed.

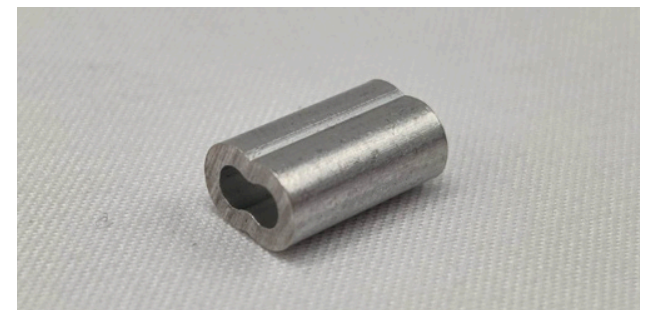
## 2) BODY



Screen, Radiator-ND2  
0000-08-D231



Grill, ND2  
0000-08-D208



Hood / Trunk Release Wire Crush  
Sleeve  
(front/rear access)  
0000-08-5021



Hood / Trunk Release Wire  
(front/rear access)  
0000-08-5025



Front and Rear Tow Hooks  
0000-04-5996-SH



Fascia Support (Left Front)  
0000-07-5811-LF



Fascia Support (Right Front)  
0000-07-5810-RF



Fascia Support (Left Rear)  
0000-07-5813-LR



Fascia Support (Right Rear)  
0000-07-5812-RR



Fascia Support Frame Bracket  
(Left Rear)  
0000-07-5815-LR

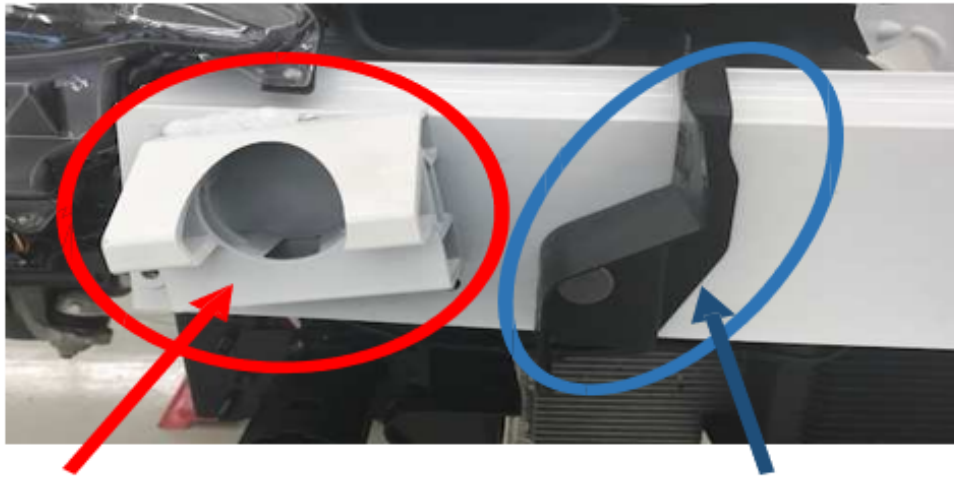


Fascia Support Frame Bracket  
(Right Rear)  
0000-07-5814 - RR



Fascia Support Weld Bungs  
0000-07-5816

ND2-TSB-2023-01-10 - Fliis Performance High Energy Bumper  
Insert - Required



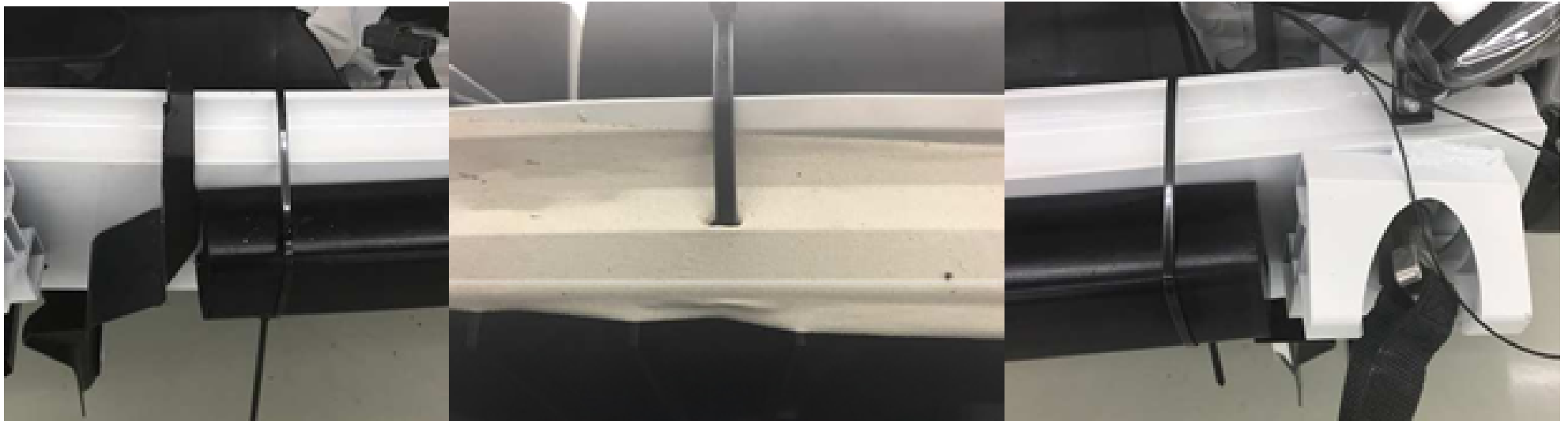
**Right & Left protrusions that must be removed**

**Air Guide that must be removed**



High Energy Bumper Insert  
FPFTBUMPSPT

Superseded by High Energy Bumper Insert  
FP3LTRLFL



Single piece of FIA Type A roll bar padding, 30mm thick to fit 1 3/4" - 2" bar diameter

**FOAM INSERT**

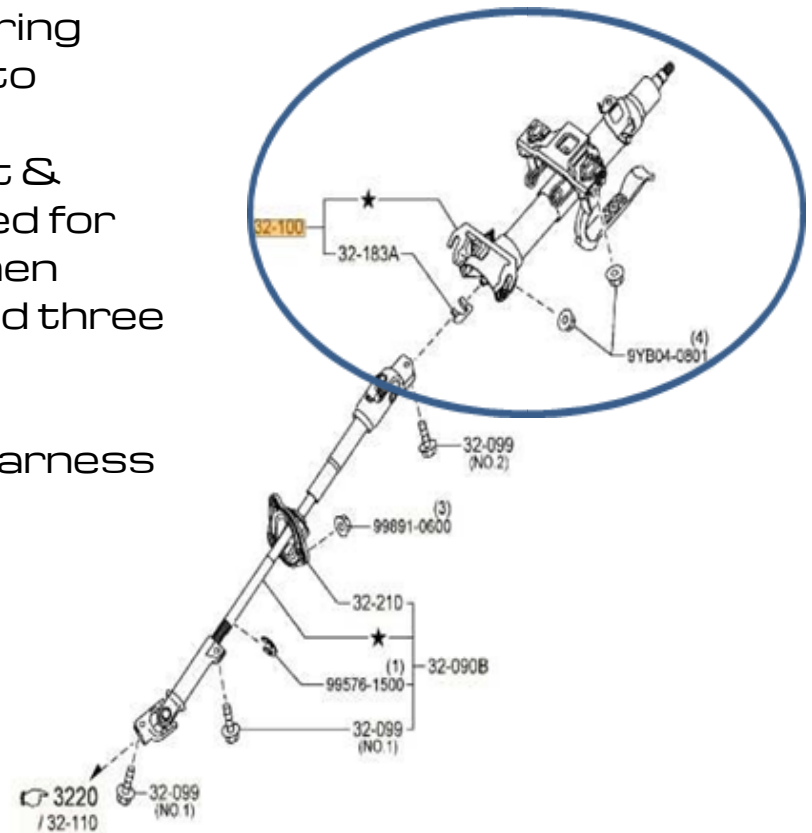
a. You may install a single piece of FIA Type A roll bar padding, 30mm thick to fit 1 3/4" - 2" bar diameter (with trapezoidal profile) between the air guide and the tow hook. Use wire ties around the bumper beam and only cut the minimum size slit to pass the wire tie past the tape which is under the bumper beam. Please note that the picture below still has the protrusion around the tow hook, and once removed the foam may be installed up to the tow hook mounting hole



Optional changes to the Mazda MX-5 Cup Car steering column with the addition of the telescoping feature to assist with driver comfort.

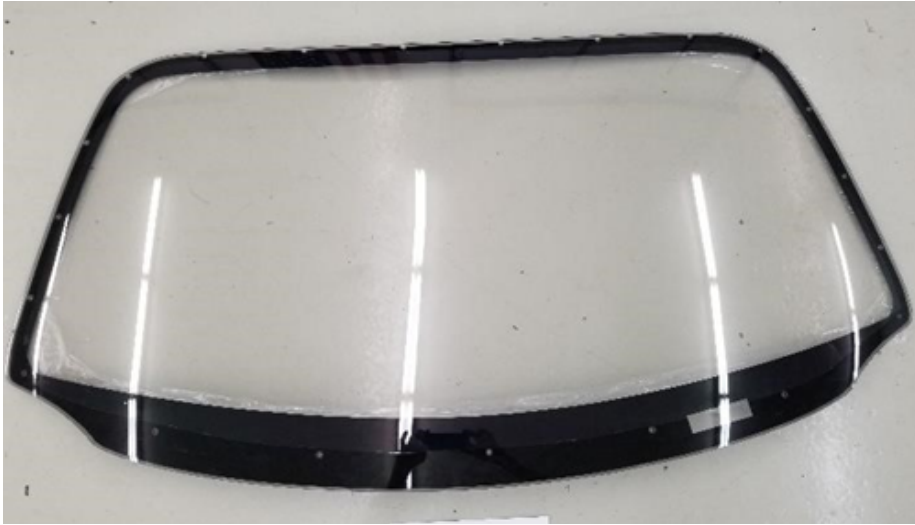
1. Part number ND6N-32-100 (2019+ Model year tilt & telescoping steering column) may now be substituted for NA1J-32-100 (2016 - 2018 tilt steering column). When updating to the 2019 + style column, you will also need three additional parts. Mazda part numbers:

- a. 0000-08-D230 Updated MXL2 mount
- b. 0000-08-D234 Modified start/stop wiring harness
- c. 0000-08-D235 Fire bottle line





ND1 and ND2  
Polycarbonate-Windscreen-OPTIONAL



Polycarbonate Windscreen  
0000-07-5116-PT



Brace  
0000-07-5116-BR



Trim dash to allow clearance for  
windshield brace and bracket.



Bend up factory metal bracket on  
dash bar to allow clearance for brace  
bar clamp.



Attach brace support bracket to  
dash bar

### 3) BRAKES

NOTE: Brembo Front Brake Kit (0000-03-5423) & PAGID Brake Pads (0000-03-5106-61/0000-03-5116-29) are **required** for the Mazda MX-5 Cup Series Only



PAGID Front Brake Pads (MX-5C Required)  
0000-03-5106-61



PAGID Rear Brake Pads (MX-5C Required)  
0000-03-5116-29



Brembo Front Brake Kit (MX-5C Required)  
0000-03-5423



Brembo Front Brake Kit (MX-5C Required)



Brembo Front Brake Kit (MX-5C Required)



Brembo Front Brake Kit (MX-5C Required)



Brembo Front Brake Kit (MX-5C Required)



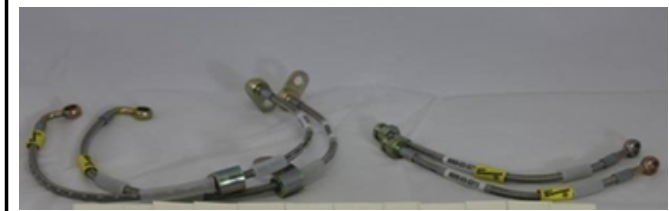
Brembo Front Brake Kit (MX-5C Required)



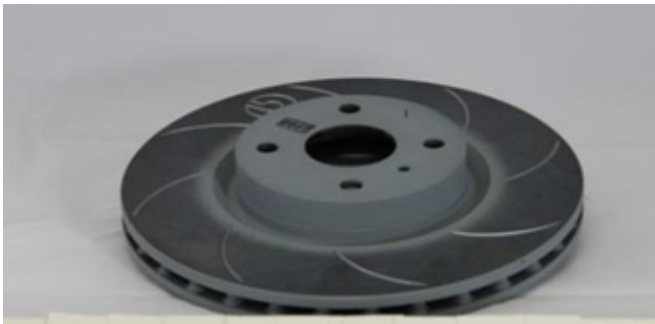
Brake Pads (Front)  
Superseded by 0000-03-5106-61  
0000-03-5106-03



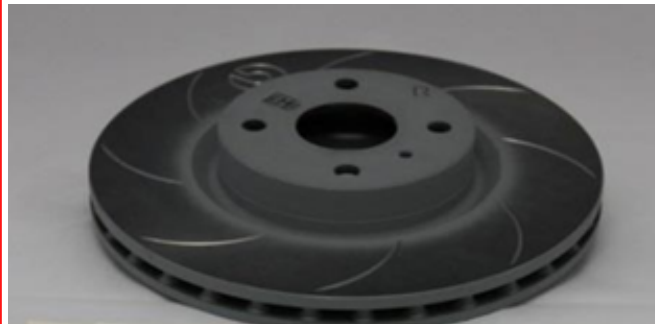
Brake Pads (Rear)  
Superseded by 0000-03-5116-29  
0000-03-5116-44



SS Brake Lines  
0000-03-5213



Rotors LF  
Superseded by 0000-03-5423  
0000-03-5406-LT



Rotors RF  
Superseded by 0000-03-5423  
0000-03-5406-RT



Brake Duct Clamps  
0000-03-5601-CL



2" Brake Duct Hose  
0000-03-5601-HS (Single 34")



(Dual) 2" Brake Duct Hose  
0000-03-5601-HS (Dual 39")  
(Optional)



(Dual) 2" Brake Duct Hose  
0000-03-5601-HS-A (Dual 39")  
(Alternative - Optional)



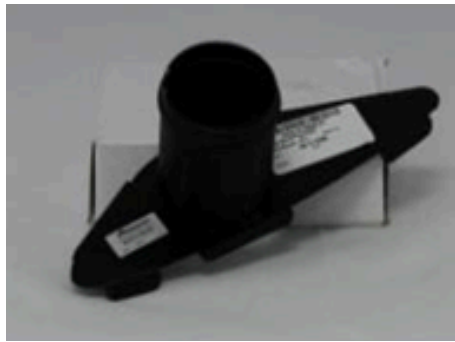
Brake Duct Backing Plate (left)  
0000-03-5601-LT



Brake Duct Backing Plate (Right)  
0000-03-5601-RT



Single Brake Duct Nozzle (Fascia-Left)  
0000-07-5808-LT



Single Brake Duct Nozzle (Fascia-Right)  
0000-07-5808-RT



Dual Brake Duct Fog (Fascia-Left)  
0000-03-5601-LTDL (Optional)



Dual Brake Duct Fog (Fascia-Right)  
0000-03-5601-RTDL (Optional)



Dual Brake Duct Flange (Left) 0000-03-5601-BKLT (Optional)

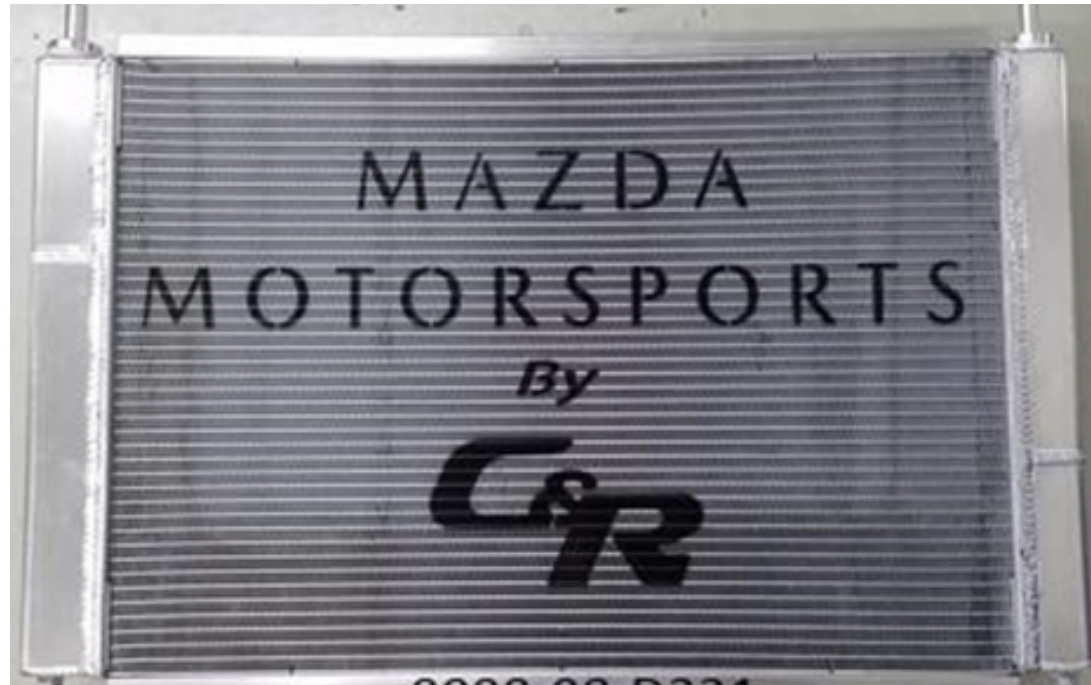


Dual Brake Duct Flange (Right)  
0000-03-5601-BKRT (Optional)



Dual Brake Duct Kit (Optional)  
0000-03-5601-DLKT

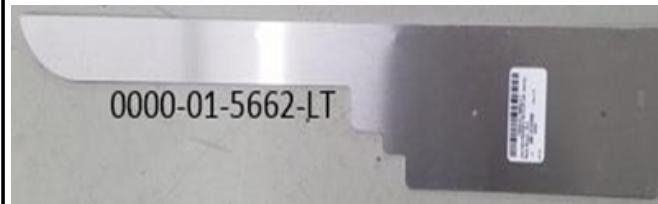
#### 4) COOLING



Radiator-ND2 Tank width 2-9/16" Thick)  
0000-08-D221



1.75"x24" Flap Trim (Radiator)  
0000-01-566B



Duct, Radiator-Left-ND2  
0000-01-5662-LT



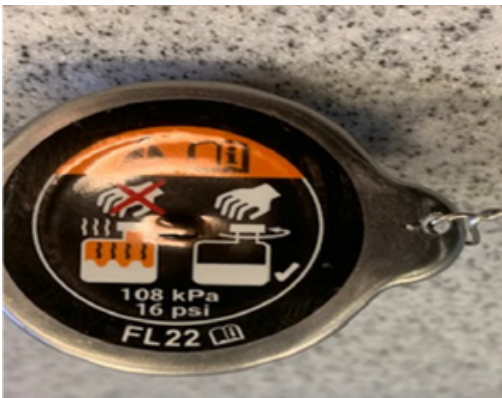
Duct, Radiator-Right-ND2  
0000-01-5662-RT

ND2-TSB-2020-08-31-Global-MX-5-Cup-Cooling-  
Management-Tools-Revised-From-2019-05-23-TSB

Must use 16 psi, 19 psi or  
30 psi radiator cap from  
Mazda Motorsports or  
Flis Performance

ND2-TSB-2022-04-14 -  
Radiator Cap Safety Wire  
Update - Optional

Competitors are solely  
responsible for attaching  
the safety wire properly. If  
the wire is attached to the  
upper water hose clamp,  
we encourage  
competitors to ensure the  
clamp is tight. We have  
seen teams that have not  
tightened the clamp  
properly and this resulted  
in upper hose failure.



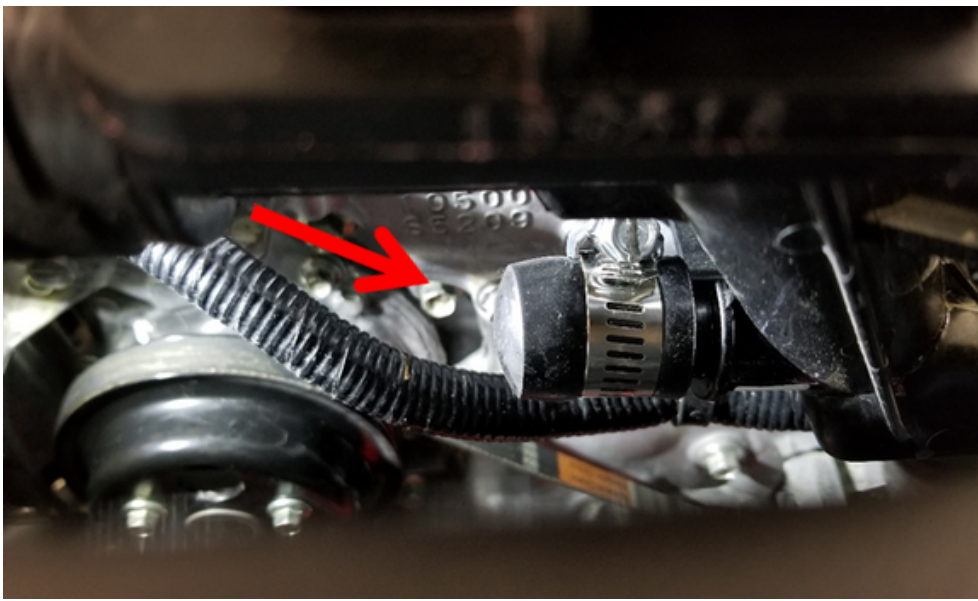
C&R High Pressure Radiator Cap  
0000-08-D236 -16LBS



C&R High Pressure Radiator Cap  
0000-08-D236 - 19-21LBS



C&R High Pressure Radiator 30 LB  
Cap 0000-08-D242 -30LBS



·Place 1/2 inch cooling system bypass cap (Mazda Part - 0000-08-D237) onto cap housing nipple. Secure with Hose Clamp.



·Place 3/8 cap (Mazda Part - 0000-08-D237) on Thermostat/Water Pump Housing Nipple. Secure with Hose Clamp.



Radiator Foam  
Type of Foam Used Is Open.  
Two Pieces Required



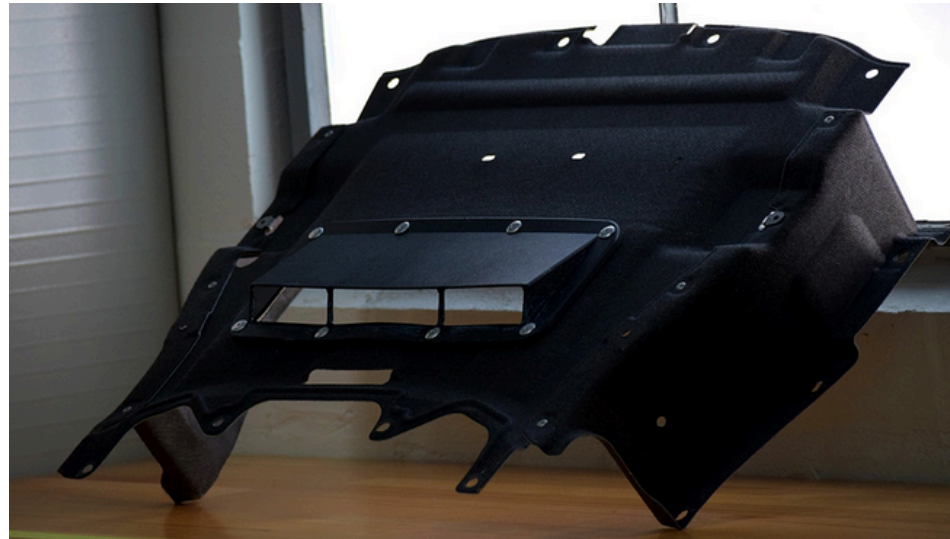
Type of Adhesive Used Is Open  
Cut Foam to Fit Gaps Between Floor  
and Bottom of Radiator



Foam Fitment and Installation



Use of White Gaffer Tape Required  
Taping of Duct Work is open. Tape Up Gaps and Seams in Radiator Ducting



Diffuser - Optional - TSB-2020-08-31-Global-MX-5-Cup-Cooling-Management-Tools-Revised-From-2019-05-23-TSB-0000-08-D243



## 5) DIFFERENTIAL



DIFFERENTIAL-SEALED  
0000-02-MS14-SD



Diff Cover, Top with -6  
0000-08-5033



Diff Cover, Bottom with  
Temperature Sensor  
0000-08-5033



Diff & Trans Oil cooler (one each)  
0000-02-5600



Differential Bushing Inserts  
0000-04-5901



Diff & Trans Oil Cooler Shroud with  
Fan - Top View  
0000-08-5012-KT



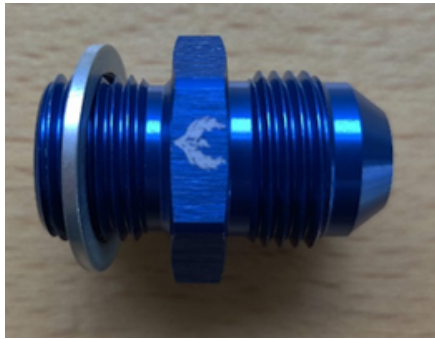
Diff & Trans Oil Cooler Shroud with  
Fan - Bottom View  
0000-08-5012-KT



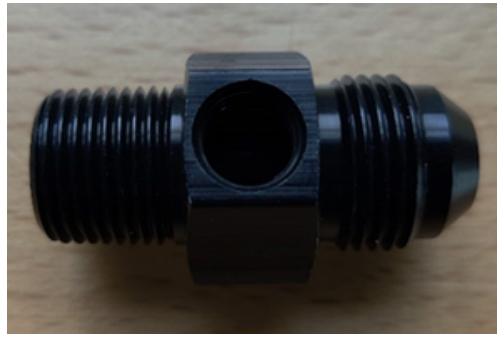
Diff & Trans Fluid Transfer Pump  
with Viton Seals (one each)  
0000-08-5031



Diff Pump Bracket Welded to Left  
Rear Frame  
0000-08-5034



-8 AN Male to 18mm Male (Diff OUT)  
0000-08-D806 (Optional)



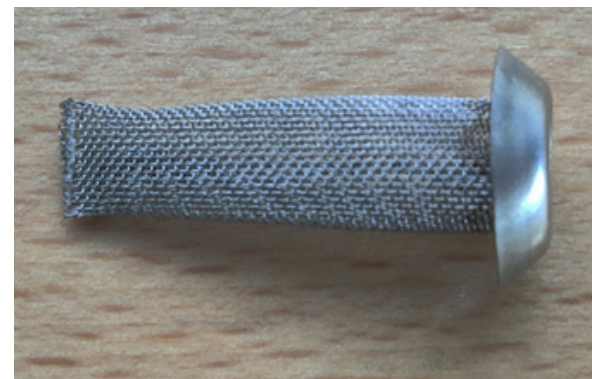
3/8" NPT Male to -8 AN Male with  
1/8" Sensor Hole (Diff Pump)  
0000-08-D807 (Optional)



3/8" NPT Male to -8 AN Male (Diff  
Pump)  
0000-08-D808 (Optional)



Engine oil cooler fittings m22- an8  
0000-08-5014  
---  
Can be used for -8 Line Update



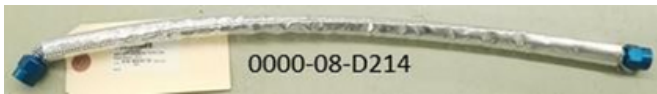
-8 AN Filter  
0000-08-D804 (Optional)



-8 Diff out to Diff Pump In (FLIS - 048)  
24" 0000-08-D812 (Optional)

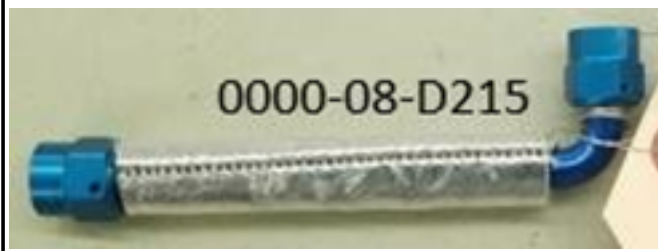


-8 Diff Cooler Out to Diff In (FLIS -  
049) 9" 0000-08-D813 (Optional)



0000-08-D214

-6 Oil Line, Diff-Housing to Filter-ND2  
0000-08-D214



0000-08-D215

-6 Oil Line, Diff-Filter to Cooler-ND2  
0000-08-D215



0000-08-D216

-6 Oil Line, Diff-Cooler to Pump-ND2  
0000-08-D216



0000-08-D217

-6 Oil Line, Diff Pump to Housing-ND2  
0000-08-D217



Diff & Trans Oil Cooler Fittings  
Only for -6 Lines  
0000-02-5603



-6 Male to 3/8 NPT Pipe Male Diff  
Pump  
0000-08-5030

## 6) DATA



AiM MXL2 Data Logger w/GPS  
0000-10-9303 - **Superseded by**  
**AiM MXS 1.3**



AiM MXS 1.3 Data Logger w/GPS



AiM 22 Pin Harness for MXL2  
0000-10-9304



Shaft Collar 1.75", MXL2 Mount-ND2  
0000-08-D230



AiM 3.5m Patch Cable  
0000-10-9305



AiM PT-100 Temp Sensor for  
differential, transmission and engine  
oil temp.  
0000-10-9306

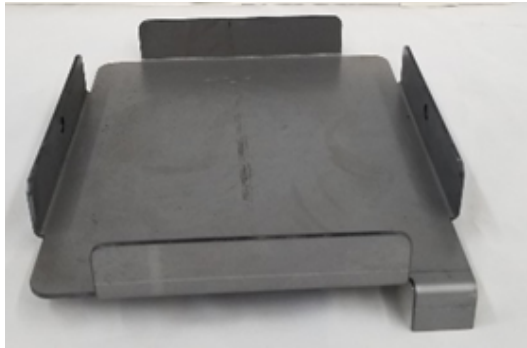


Water Pressure Sensor  
(Superseded by 0000-01-5662-WP)



Water Pressure Sensor Kit -  
0000-01-5662-WP

## 7) ELECTRICAL



New Battery Tray  
0000-08-5043-HL



Adaptor, Tray (Optional) ND2  
(Superseded by 0000-08-5043-HL)  
0000-08-D202



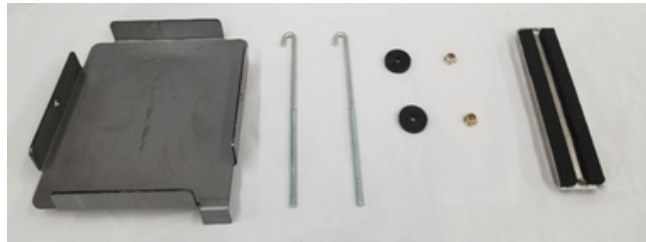
Odyssey Battery  
0000-08-5043



New Battery hold down  
0000-08-5043-CL



Hold Down Hardware  
0000-08-5043-HD



Upgrade Battery Kit  
0000-08-5043-KT



ECU, Bosch MS6 Cup - ND2  
0000-08-D227



Mount Assy, ECU W/Dual Lock-ND2  
0000-08-D228



Mount Assy, ECU Adapter  
0000-08-D204



Adaptor Harness, ECU-ND2  
0000-08-D203



## Braille Battery - Optional Orders & Part Numbers:

The Braille Battery components **MUST** be ordered through Scott Kaluza with Mazda Motorsports.

"All orders will have to be processed as a drop ship and be emailed to Scott Kaluza ([SKaluza@mazdausa.com](mailto:SKaluza@mazdausa.com)) with the **SUBJECT** of the email being "Braille battery drop ship order/MX-5 Cup."

Email Drop Ship Order **EXAMPLE:**

To: [SKaluza@mazdausa.com](mailto:SKaluza@mazdausa.com)

Subject: "Braille battery drop ship order/MX-5 Cup"

Battery Only: 0000-10-9601 - G30 Battery individual

Charger Only: 0000-10-9602 - TM393 Charger individual

Battery & Charger Combo: 0000-10-9600 - G30C Combo



Sensor, O2-Bosch LSU 4.9-ND2  
0000-08-D226



Nut, Cage Ground M8-ND2  
0000-08-0D206



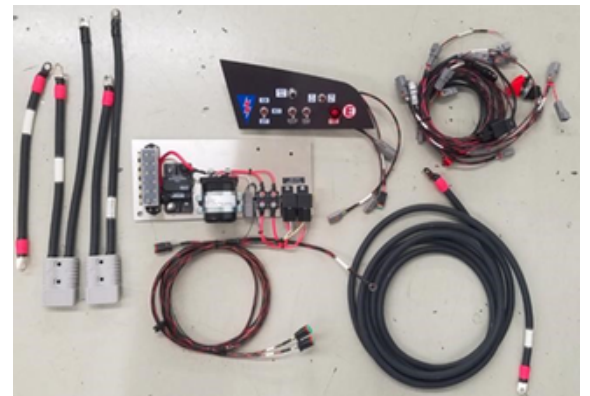
Stud, Cage Ground M8x20-ND2  
0000-08-0D205



Power Distribution Block -  
0000-08-5150



Harness, Start/Stop  
0000-08-D234



Fliis Performance Wiring Kit



Switch Panel Close-up  
0000-08-D241



Switch Panel, Back Side  
0000-08-D241



Rear Power Distribution Panel View  
0000-08-D238





TR2 Transponder  
0000-08-5044-TR2



Superseded By - 0000-08-5044-TR2  
AMB Flex Transponder  
0000-08-5044



Speed Limiter, Pit Lane-ND2  
0000-08-D233



MPI Single External Button Holder:  
0000-10-5660-1B



MPI Dual External Button Holder:  
0000-10-5660-2B

## 8) ENGINE



Oil filter Sandwich Plate  
0000-01-5600-KT



Vacuum Control Unit Bracket  
68\_Vac\_CNTRL\_BKT



Engine Mount Reinforcement  
Bracket Left  
0000-02-5702-LT



Engine Mount Reinforcement  
Bracket Right  
0000-02-5702-RT



Engine Bracket Left  
0000-02-5712-LT



Engine Bracket Right  
0000-02-5712-RT



Bosch Throttle Body Kit  
0000-08-D200

### SKYACTIV-G (Non-turbo) Filters

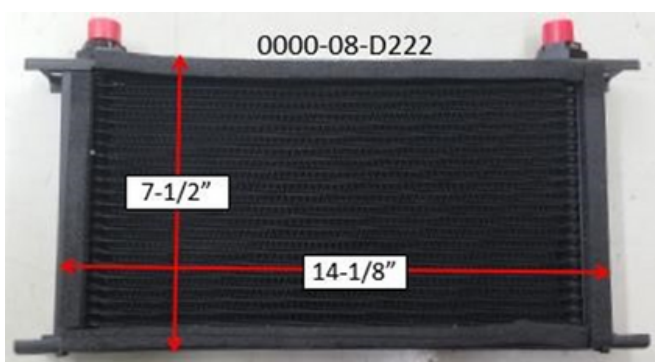
PE01-14-302A or B

PE01-14-302A -MV

1WPE-14-302



ONE BAND



Oil Cooler SET 925-ND2  
0000-08-D222



Bracket, Oil Cooler-Short-ND2  
0000-08-D225



Engine oil cooler fittings m22- an8  
0000-08-5014

---  
Can be used for -8 Line Update



Mounting Hardware and Foam,  
Diff/Trans Cooler-ND2  
0000-08-D209



Line, Oil Cooler-Long-ND2  
0000-08-D223



Line, Oil Cooler-Short-ND2  
0000-08-D224



Zip Ty Saddles - Optional  
0000-08-5045

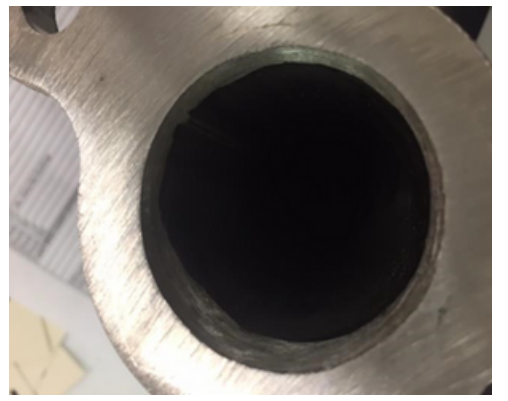
9) EXHAUST



Header  
0000-06-5410



Header  
0000-06-5410



Header  
0000-06-5410



Header  
0000-06-5410



Header  
0000-06-5410



Mid Pipe  
0000-06-5430



Muffler (Non-MX-5 Cup Series)  
0000-06-5440-01



Muffler (Non-MX-5 Cup Series)  
0000-06-5440-01



Muffler Delete Pipe (Required)  
FLIS\_MFLR\_DLT

## 10) FLUIDS



Idemitsu Pro Racing Engine Oil Full Synthetic 5W-40  
Part Number: 0000-MS-5w40-QT



Idemitsu Pro Racing Gear Oil 75W-90  
Part Number: 0000-MS-7590-QT

Idemitsu Pro Racing Gear Oil 75W-90  
0000-MS-7590-QT

SADEV is approximately 2 quarts (Dry System: New installation including lines and coolers) (1.5 quarts for Wet System)

H-Pattern Transmission is approximately 5 quarts, and differential is approximately 2 quarts.

**NON- SADEV**

(Brake Fluid Brand - OPEN)

To run the Mazda MX-5 Cup Series, the Brake Fluid must meet the performance requirements of DOT 4 OR HIGHER



Engine Coolant  
0000-08-5028

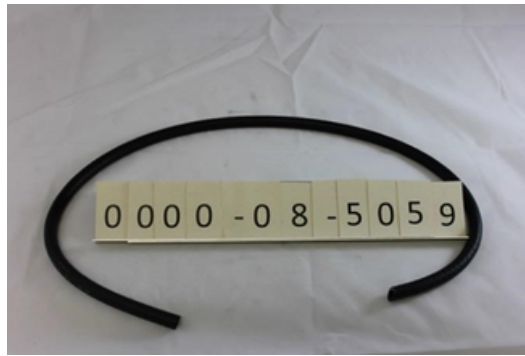


Mo Cool by Motul  
0000-08-5028-MC

# 11) FUEL



Fuel Vent Hose, 1/4"  
0000-08-5059



Fuel Tube Hose Clamps  
0000-08-5060



Fuel Tube, 1" Stainless Steel  
0000-08-5061



Fuel Pump Out Kit 0000-06-5210  
Only **RED** fuel tee is allowed, black tee  
must NOT be used



Fuel Tube, 1" I.D x 6" Length Tygon  
Tubing  
0000-08-5062

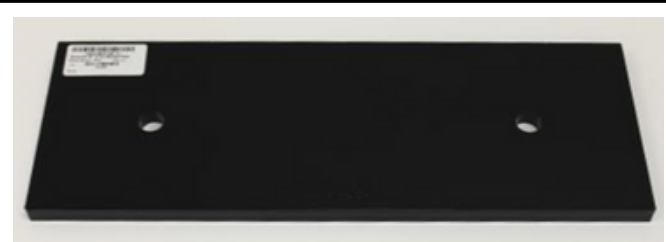
## 12) INTERIOR



Ballast box  
0000-08-5053



5 lbs Ballast Plate (1/4" Steel)  
0000-08-5128-05



10 lbs Ballast Plate (1/2" Steel)  
0000-08-5128-10



Floor Pan Bolts, M6 x 1.0 x 16mm Flat  
Allen  
0000-08-5058



1.15Kg Ballast Plate  
0000-08-5128-1.1K-JP



1.15Kg Ballast Plate  
0000-08-5128-1.1K-JP



Bulk Head Fastener, M4 Flat Washer  
0000-08-5064



Bulk Head Fastener, M4 Nyloc Nut  
0000-08-5065

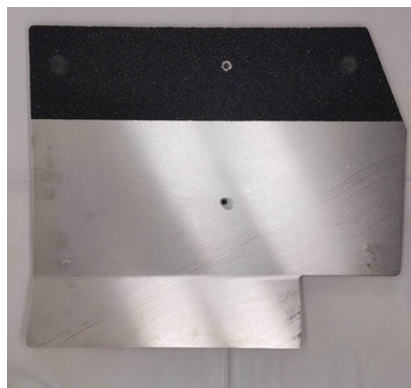


Bulk Head Fastener, M4 x 12mm  
0000-08-5066





Dead Pedal Assembly, 1/8" Steel  
Plates  
Welded to Stock Panel  
0000-08-5074-ASM



Floor Pan, 1/8" Aluminum  
0000-08-5076-LT



Rear Bulk Head Center, 0.063" AL  
0000-08-5078



Rear Bulk Head Fuel Cover, 0.063" AL  
0000-08-5079



Rear Bulk Head Left, 0.063" AL  
0000-08-5080



Rear Bulk Head Right, 0.063" AL  
0000-08-5081



Steering wheel adaptor  
0000-08-5083



7/8 Grommet, Bulkhead,  
0000-08-5095

Roll cage 0000-08-5082

(See FIA Homologation  
Safety  
Cage Certificate, IMSA  
20150723\_MAZDA\_MX-5)

### 13) SAFETY EQUIPMENT



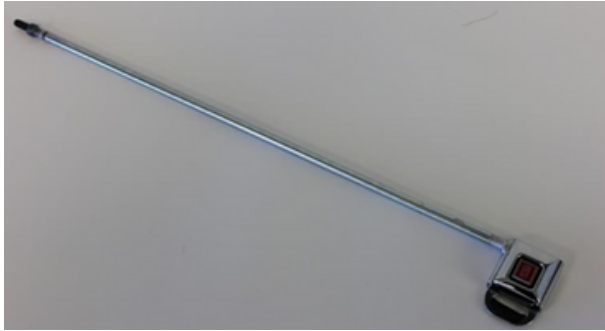
Driver Door Net Mounting Heim  
0000-08-5099



Driver Door Net Mounting Jam Nut  
0000-08-5100



Driver Door Net Mounting Nut  
(Nyloc)  
0000-08-5101



Driver Door Net Rod Assembly  
Superseded - 0000-05-5102



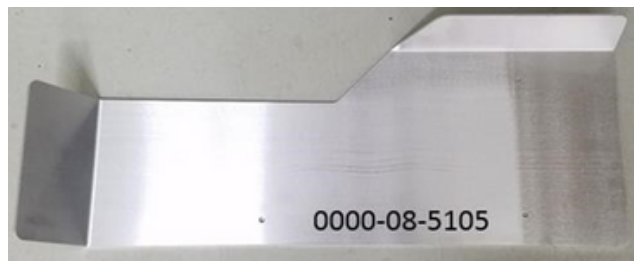
FIA Compliant Driver Door Net  
0000-08-5097



Right Side Net  
0000-08-5106



Driver Door Net Rod Assembly  
0000-05-5102V2



Leg Brace / Wire Cover Panel  
0000-08-5105



Fire System  
FP3LTRFL



Fire system -  
(Superseded by 0000-08-5103-2)  
0000-08-5103



Bracket, Fire Bottle w/Clamps  
ND2  
0000-08-D201



Fire bottle line -  
0000-08-D235



Leg Brace Stand-Off (Rear)  
0000-08-5131



Leg Brace Stand-Off (Front)  
0000-08-05130



Seat Mount Baseplate  
0000-08-5111-LT



Roll Bar Padding  
0000-08-5107



Flis Performance Shoulder Belt Extension  
Bracket (Part #0000-08-5110-FPSH) Optional

# 14) SUSPENSION AND SUSPENSION BRACING



Lower Strut Tower Brace JIS Nut  
0000-08-5112



Upper Strut Tower Brace Flanged Nut  
0000-08-5113



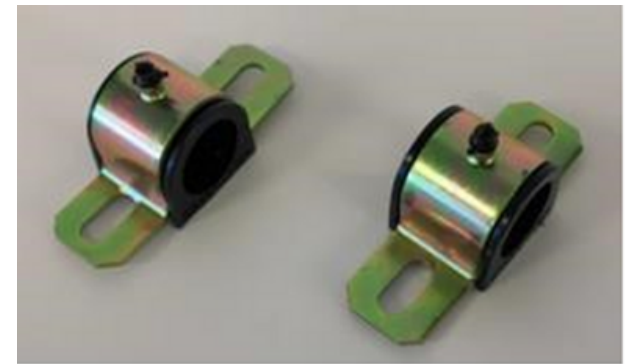
Strut Tower Brace  
0000-04-5626



Strut Tower Brace  
0000-04-5626



Strut Tower Brace  
0000-04-5626



1.25" Front Sway Bar Bushings  
0000-04-5606BS



Front Sway Bar  
0000-04-5606-FT

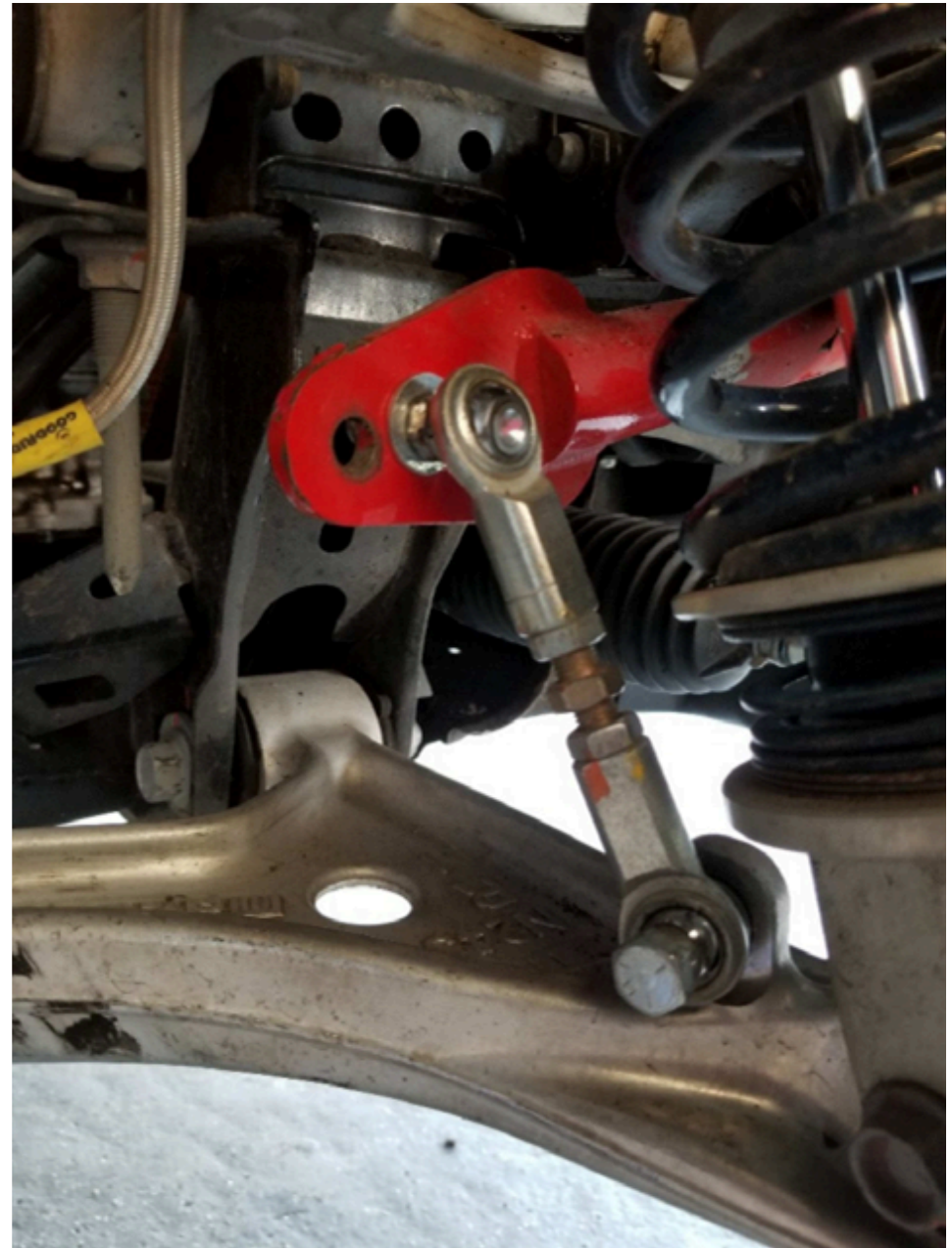


Front Sway Bar  
0000-04-5606-FT

ND1-TSB-2017-05-23-Sway-Bar-  
Mount-Washer-OPTIONAL

Sway Bar End Links - Front  
0000-04-5495

The front sway bar end link attachment washers' sequence, may be altered from how the car was delivered which are 4 in total per side of the car. The total number of four washers may not change per side, but their location (top to bottom or bottom to top) may. The homologated washer is still the only allowed washers.



Mazda MX-5 Cup Car Technical Service  
Bulletin #2022-01-13 #D Optional:  
Disconnecting of Sway Bars

This TSB describes:  
Disconnecting Sway Bars  
and method of securing  
components. To allow  
additional suspension tuning  
in the interest of  
competition and  
performance, teams will be  
allowed to disconnect front  
and/or rear sway bars.  
However, all sway bar  
components including but  
not limited to end links,  
washers, and hardware  
must remain on the vehicle  
during all on track sessions.  
End links must be securely  
attached at all times. (See  
the picture below of one  
method used to secure the  
end links.)

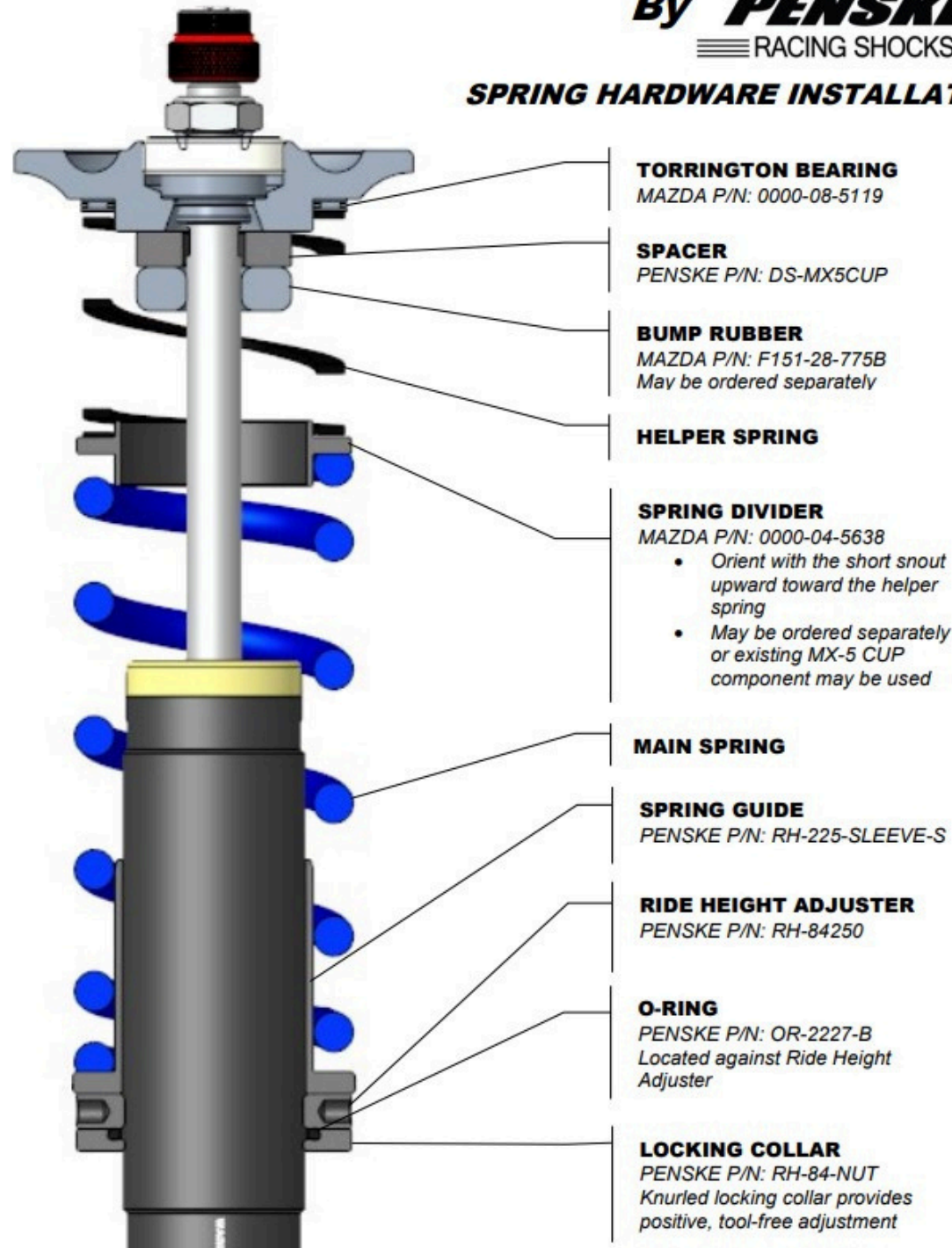


Homologated for  
the Mazda MX-5  
Cup Car series  
only

MAZDA MOTORSPORTS

By **PENSKE**  
RACING SHOCKS

**SPRING HARDWARE INSTALLATION**



# MAZDA MOTORSPORTS

**By PENSKE**

≡ RACING SHOCKS ≡

## MOUNT ASSEMBLY

### MOUNTING PLATE

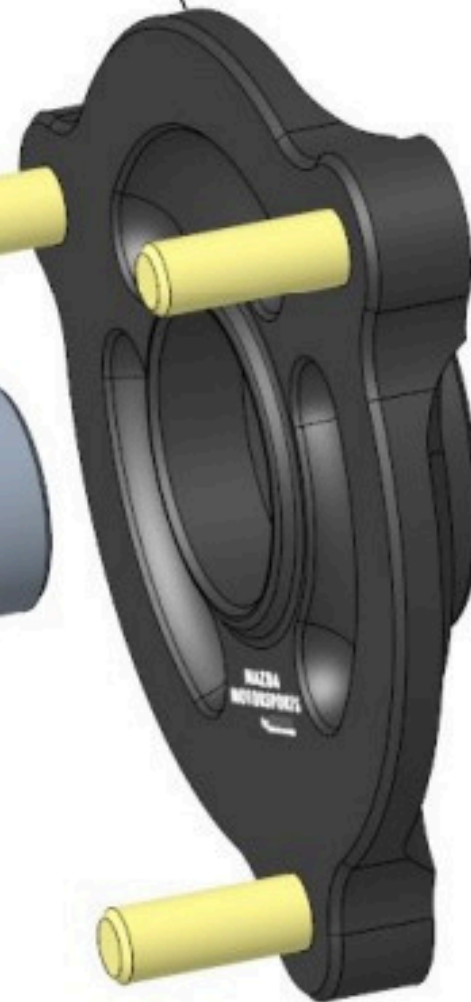
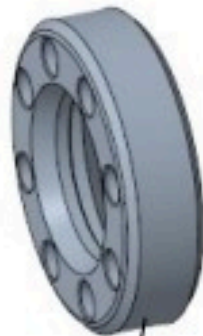
FRONT PENSKE P/N: HG-MX5CUP-F, 3 bolt  
REAR PENSKE P/N: HG-MX5CUP-R, 2 bolt

### M10 x 1.25 STUDS

For use with stock mounting nuts

### SPHERICAL BEARING

PENSKE P/N: MO-COM10T



### MOUNTING SPACER

PENSKE P/N: BU-MX5CUP  
2 Places both with larger diameter facing outward



### SPACER

PENSKE P/N: DS-MX5CUP  
Bump rubber support

### BEARING NUT

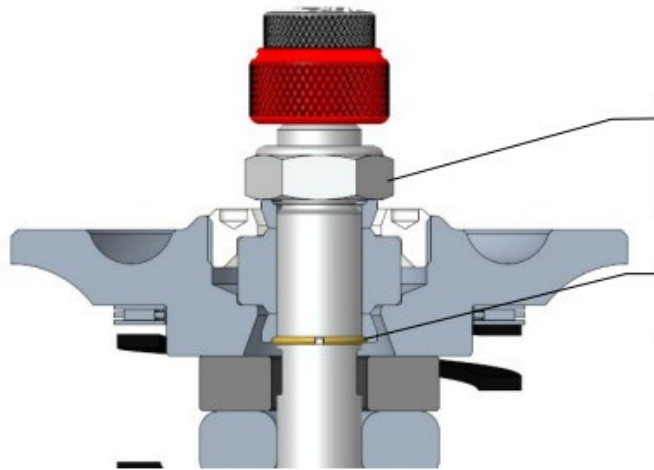
PENSKE P/N: NT-MX5CUP-MT  
Torque: 50ft-lb  
LOCTITE 243 (blue)



# MAZDA MOTORSPORTS

By **PENSKE**

≡ RACING SHOCKS ≡



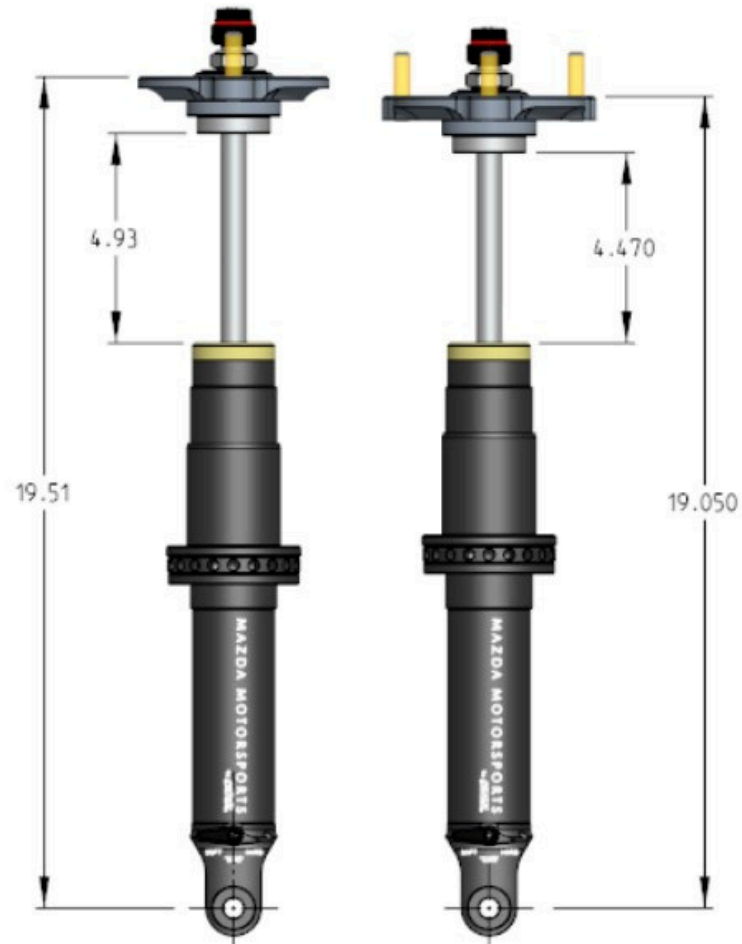
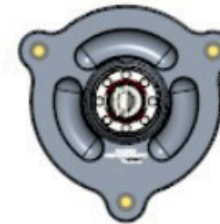
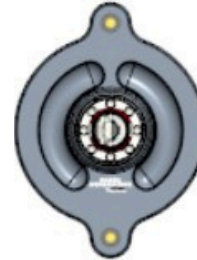
**SHAFT LOCKNUT**  
PENSKE P/N: NT-4J-NYLOC  
Torque: 40ft-lb

**RETAINING RING**  
PENSKE P/N: RR-58

**REAR**

**FRONT**

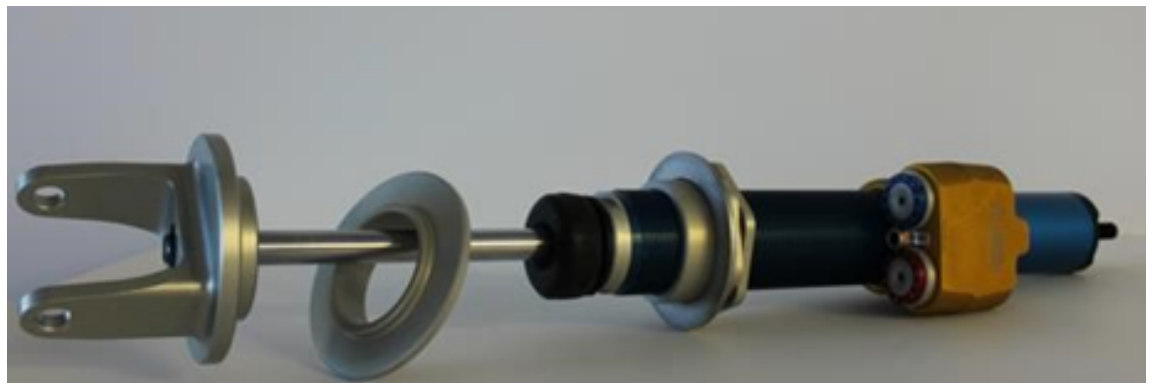
**FRONT/REAR COMPARISON**



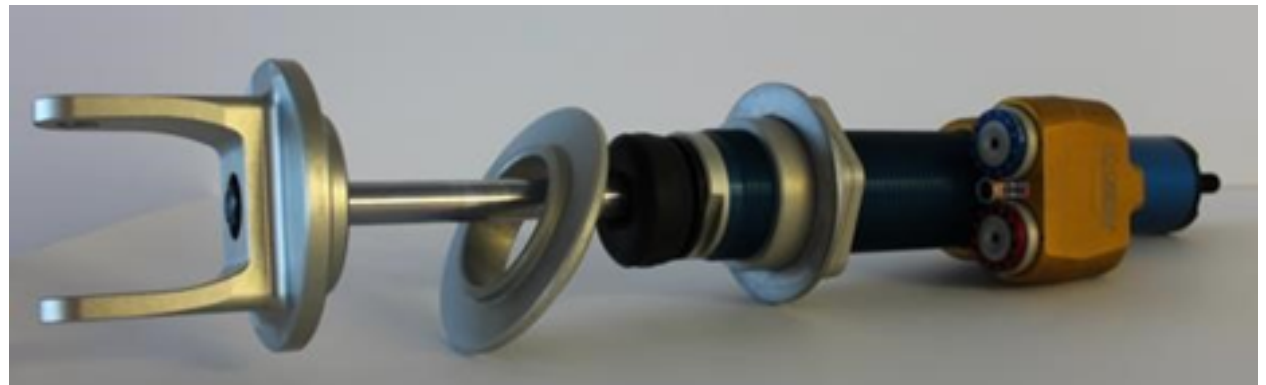


Sway Bar End Links - Front  
0000-04-5495

NOTE: The front sway bar end link attachment washers' sequence, may be altered from how the car was delivered which are 4 in total per side of the car. The total number of four washers may not change per side, but their location (top to bottom or bottom to top) may. The homologated washer is still the only allowed washers



Damper - Rear 0000-04-5617, shown with intermediate spring perch and Bump Stop Mazda Part # F151-28-775B  
0000-04-5617



Damper - Front 0000-04-5616, shown with intermediate spring perch and Bump Stop  
0000-04-5616



Sway Bar End Links - Rear  
0000-04-5496



Damper Rubber Mazda Part #  
F151-28-775B



Damper Lock Nut Kit, 4 Upper, 2  
Rear Lower Nuts  
0000-04-5619



Damper Top Mount Kit  
0000-04-5618



Rear Lower Damper Lock Nut,  
0000-08-5116



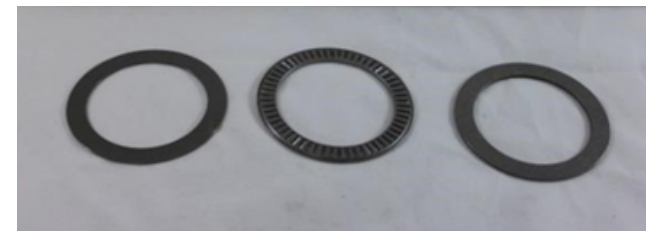
Rear Spring 300 2.25 ID X 7"  
0000-04-5300-07



Front Spring 500 2.25 ID X 7"  
0000-04-5500-07



Helper Spring  
0000-04-9927



Torrington Bearing  
0000-08-5119



Lug Nuts  
0000-04-5906



MSI Wheel Studs  
0000-04-5905



ARP Wheel Stud -  
100-7719 (OPTIONAL)

## 15) WHEELS & TIRES



Tire: Michelin Pilot Sport Competition  
Size: 20/61-17



**SUPERSEDED** by Michelin Pilot Sport Competition Tire  
Tire: Michelin Pilot Sport Competition  
Size: 20/61-17



Tire: MX-5C Michelin Competition  
Wet 20/61-17 P2G

20/61-17

**MICHELIN Pilot Sport Cup<sup>T</sup> H1**

<b>Usage</b>	Daytona Speedway - <b>FRONT axle</b>
<b>Charge maxi / Max load (static + dynamic)</b>	390 daN
<b>Vitesse maxi / Max speed</b>	240 km/h / 149 mph
<b>Jante nominale / Nominal rim</b>	7.5 J 17
<b>Pression mini à froid / Minimum cold pressure</b>	1.5 bar / 21.8 psi
<b>Longueur du relais / Stint length</b>	190 km / 118 mi

Nombre de relais / Number of stints	Pression mini à chaud / Minimum hot pressure (bar / psi)					
Carrossage / Camber	2.0 / 29.0	2.1 / 30.5	2.2 / 31.9	2.3 / 33.4	2.4 / 34.8	2.5 / 36.3
-2.81°	0	0	0	0	0	0
-2.51° to -2.8°	0	0	1	1	1	1
-2.21° to -2.5°	0	1	1	1	1	1
From -1.0° to -2.2°	0	1	1	1	1	1

**MICHELIN Pilot Sport Cup<sup>T</sup> H1**

<b>Usage</b>	Daytona Speedway - <b>REAR axle</b>
<b>Charge maxi / Max load (static + dynamic)</b>	390 daN
<b>Vitesse maxi / Max speed</b>	240 km/h / 149 mph
<b>Jante nominale / Nominal rim</b>	7.5 J 17
<b>Pression mini à froid / Minimum cold pressure</b>	1.5 bar / 21.8 psi
<b>Longueur du relais / Stint length</b>	190 km / 118 mi

Nombre de relais / Number of stints	Pression mini à chaud / Minimum hot pressure (bar / psi)					
Carrossage / Camber	2.0 / 29.0	2.1 / 30.5	2.2 / 31.9	2.3 / 33.4	2.4 / 34.8	2.5 / 36.3
-3.81°	0	0	0	0	0	0
-3.51° to -3.8°	0	0	1	1	1	1
-3.21° to -3.5°	0	1	1	1	1	1
From -1.0° to -3.2°	0	1	1	1	1	1

## MICHELIN Pilot Sport GT P2H

<b>Usage</b>	Daytona Speedway - <b>FRONT axle</b>
<b>Charge maxi / Max load (static + dynamic)</b>	390 daN
<b>Vitesse maxi / Max speed</b>	240 km/h / 149 mph
<b>Jante nominale / Nominal rim</b>	7.5 J 17
<b>Pression mini à froid / Minimum cold pressure</b>	1.6 bar / 23.2 psi
<b>Longueur du relais / Stint length</b>	190 km / 118 mi

Nombre de relais / Number of stints	Pression mini à chaud / Minimum hot pressure (bar / psi)					
	2.0 / 29.0	2.1 / 30.5	2.2 / 31.9	2.3 / 33.4	2.4 / 34.8	2.5 / 36.3
<b>Carrossage / Camber</b>						
-2.81°	0	0	0	0	0	0
-2.51° to -2.8°	0	0	0	0	1	1
-2.21° to -2.5°	0	0	0	1	1	1
From -1.0° to -2.2°	0	0	1	1	1	1

## MICHELIN Pilot Sport GT P2H

<b>Usage</b>	Daytona Speedway - <b>REAR axle</b>
<b>Charge maxi / Max load (static + dynamic)</b>	390 daN
<b>Vitesse maxi / Max speed</b>	240 km/h / 149 mph
<b>Jante nominale / Nominal rim</b>	7.5 J 17
<b>Pression mini à froid / Minimum cold pressure</b>	1.6 bar / 23.2 psi
<b>Longueur du relais / Stint length</b>	190 km / 118 mi

Nombre de relais / Number of stints	Pression mini à chaud / Minimum hot pressure (bar / psi)					
	2.0 / 29.0	2.1 / 30.5	2.2 / 31.9	2.3 / 33.4	2.4 / 34.8	2.5 / 36.3
<b>Carrossage / Camber</b>						
-3.81°	0	0	0	0	0	0
-3.51° to -3.8°	0	0	0	0	1	1
-3.21° to -3.5°	0	0	0	1	1	1
From -1.0° to -3.2°	0	0	1	1	1	1

20/61-17

**MICHELIN Pilot Sport Cup<sup>T</sup> H1**

<b>Usage</b>	Track without banking - <b>FRONT axle</b>
<b>Charge maxi / Max load (static + dynamic)</b>	390 daN
<b>Vitesse maxi / Max speed</b>	240 km/h / 149 mph
<b>Jante nominale / Nominal rim</b>	7.5 J 17
<b>Pression mini à froid / Minimum cold pressure</b>	1.5 bar / 21.8 psi
<b>Longueur du relais / Stint length</b>	190 km / 118 mi

Nombre de relais / Number of stints	Pression mini à chaud / Minimum hot pressure (bar / psi)					
Carrossage / Camber	1.9 / 27.6	2.0 / 29.0	2.1 / 30.5	2.2 / 31.9	2.3 / 33.4	2.4 / 34.8
-2.81°	0	0	0	0	0	0
-2.51° to -2.8°	0	1	1	1	1	1
-2.21° to -2.5°	0	1	1	1	1	1
From -1.0° to -2.2°	0	1	1	1	1	1

**MICHELIN Pilot Sport Cup<sup>T</sup> H1**

<b>Usage</b>	Track without banking - <b>REAR axle</b>
<b>Charge maxi / Max load (static + dynamic)</b>	390 daN
<b>Vitesse maxi / Max speed</b>	240 km/h / 149 mph
<b>Jante nominale / Nominal rim</b>	7.5 J 17
<b>Pression mini à froid / Minimum cold pressure</b>	1.5 bar / 21.8 psi
<b>Longueur du relais / Stint length</b>	190 km / 118 mi

Nombre de relais / Number of stints	Pression mini à chaud / Minimum hot pressure (bar / psi)					
Carrossage / Camber	1.9 / 27.6	2.0 / 29.0	2.1 / 30.5	2.2 / 31.9	2.3 / 33.4	2.4 / 34.8
-3.81°	0	0	0	0	0	0
-3.51° to -3.8°	0	1	1	1	1	1
-3.21° to -3.5°	0	1	1	1	1	1
From -1.0° to -3.2°	0	1	1	1	1	1

## MICHELIN Pilot Sport GT P2H

<b>Usage</b>	Track without banking - <b>FRONT axle</b>
<b>Charge maxi / Max load (static + dynamic)</b>	390 daN
<b>Vitesse maxi / Max speed</b>	240 km/h / 149 mph
<b>Jante nominale / Nominal rim</b>	7.5 J 17
<b>Pression mini à froid / Minimum cold pressure</b>	1.6 bar / 23.2 psi
<b>Longueur du relais / Stint length</b>	190 km / 118 mi

Nombre de relais / Number of stints	Pression mini à chaud / Minimum hot pressure (bar / psi)					
Carrossage / Camber	1.9 / 27.6	2.0 / 29.0	2.1 / 30.5	2.2 / 31.9	2.3 / 33.4	2.4 / 34.8
-2.81°	0	0	0	0	0	0
-2.51° to -2.8°	0	0	0	1	1	1
-2.21° to -2.5°	0	0	0	1	1	1
From -1.0° to -2.2°	0	0	0	1	1	1

## MICHELIN Pilot Sport GT P2H

<b>Usage</b>	Track without banking - <b>REAR axle</b>
<b>Charge maxi / Max load (static + dynamic)</b>	390 daN
<b>Vitesse maxi / Max speed</b>	240 km/h / 149 mph
<b>Jante nominale / Nominal rim</b>	7.5 J 17
<b>Pression mini à froid / Minimum cold pressure</b>	1.6 bar / 23.2 psi
<b>Longueur du relais / Stint length</b>	190 km / 118 mi

Nombre de relais / Number of stints	Pression mini à chaud / Minimum hot pressure (bar / psi)					
Carrossage / Camber	1.9 / 27.6	2.0 / 29.0	2.1 / 30.5	2.2 / 31.9	2.3 / 33.4	2.4 / 34.8
-3.81°	0	0	0	0	0	0
-3.51° to -3.8°	0	0	0	1	1	1
-3.21° to -3.5°	0	0	0	1	1	1
From -1.0° to -3.2°	0	0	0	1	1	1





Rays 17x7-1/2 x 40 Wheel, MX-5C  
Face  
0000-04-5806



Rays 17x7-1/2 x 40 Wheel, MX-5C  
Inside  
0000-04-5806



Rays 17x7-1/2 x 40 Wheel, MX-5C  
0000-04-5806

## 16) SADEV GEARBOX



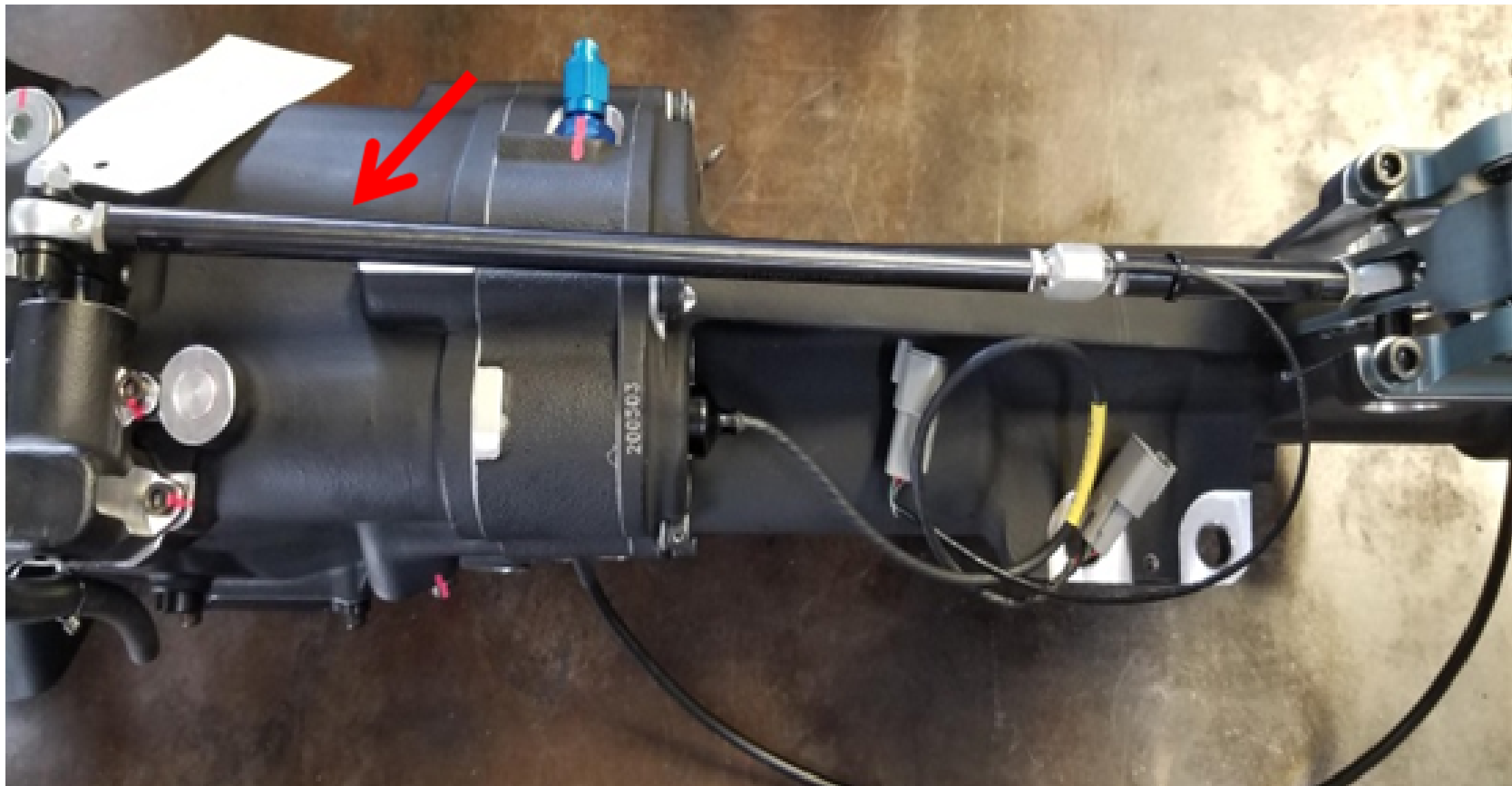
SADEV Gearbox  
0000-02-5901-SD



Banjo Fitting Kit-inline filter  
0000-02-5902-BJ



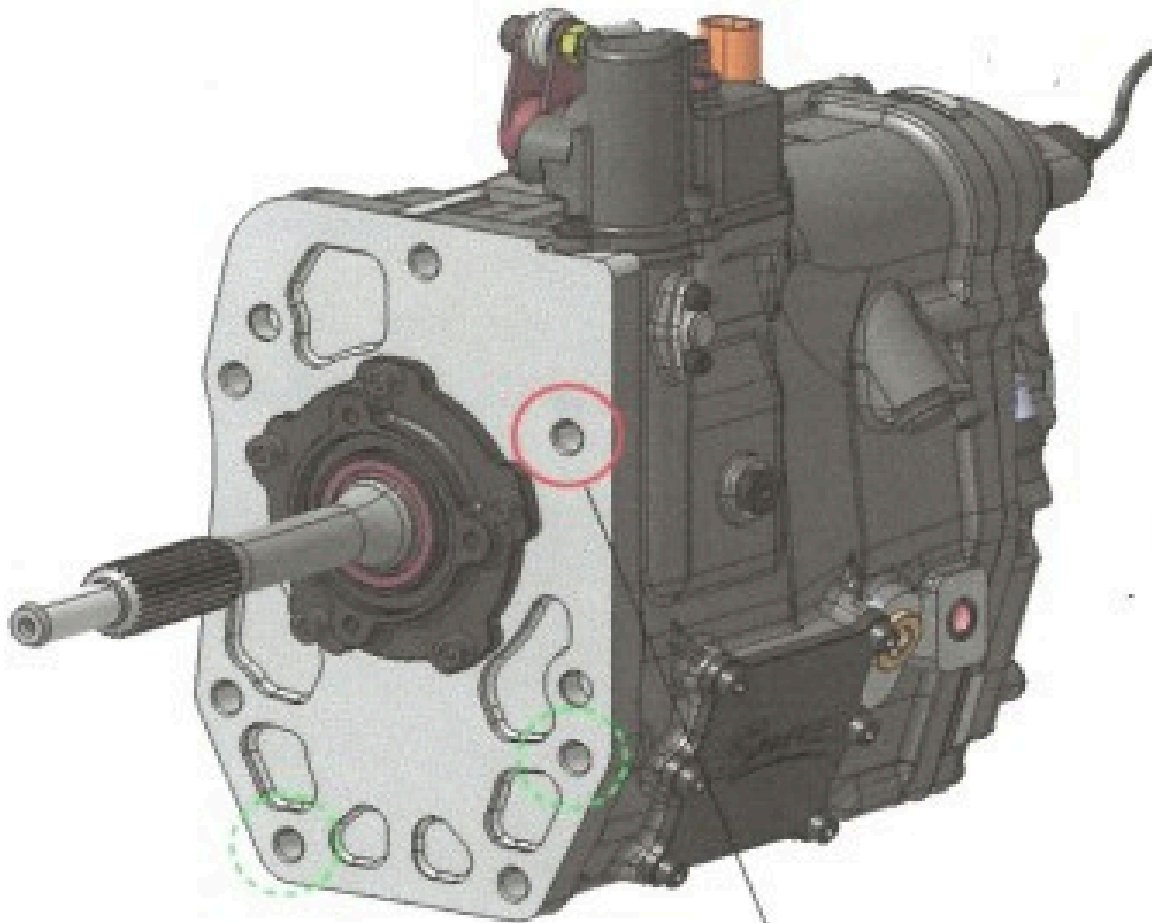
Wiring for SADEV -  
0000-10-5916



Shift Rod with Load Cell  
0000-02-5903

<b>GEAR LIST</b>	<b>FINAL DRIVE</b>	<b>19/22</b>
------------------	--------------------	--------------

<b>GEARS</b>	<b>1st</b>	<b>14/29</b>
	<b>2nd</b>	<b>17/27</b>
	<b>3rd</b>	<b>21/27</b>
	<b>4th</b>	<b>21/23</b>
	<b>5th</b>	<b>25/24</b>
	<b>6th</b>	<b>22/19</b>



Ring and Pinion - 3.455

**Careful !**  
 The depth of this thread  
 is smaller than others of  
 the mounting face.  
 Use a screw shorter



The only Homologated Shift Linkage position, is the second mounting hole from the top, as pictured above. No exceptions.



Drive Shaft  
0000-02-5902



DriveShaft Bolt Top Hat Kit  
0000-02-5902-BT



OEM PRESSURE PLATE - PE31-16-  
410 (ND.1& ND.2)



ACT CLUTCH DISC - 0000-02-  
5438-SS  
(ND.2 SADEV ONLY)



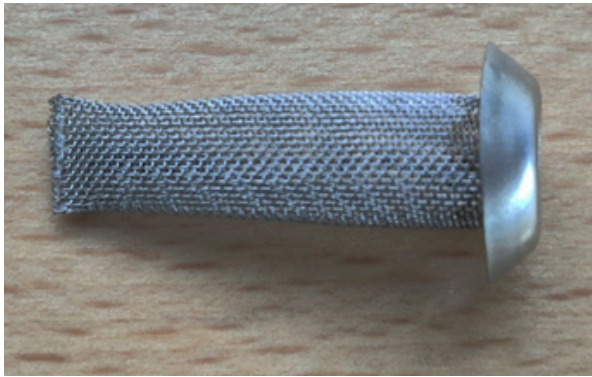
OEM RELEASE BEARING - LFO1-16-510 (ND.1 & ND.2)



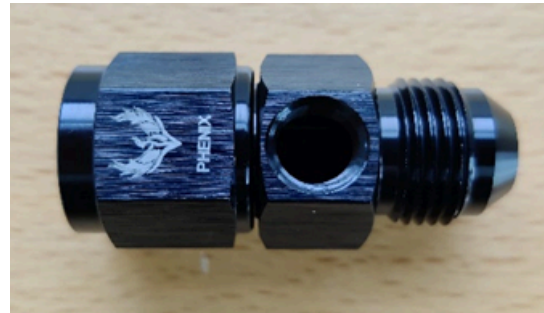
3/8" 90 Deg. NPT to -8 AN (GearBox Pump) 0000-08-D802 (Optional)



-8 AN Male to 22 mm Male (GB Cooler) 0000-08-5014  
---  
Can be used for -8 Line Update



-8 AN Filter 0000-08-D804 (Optional)



-8 AN Female to -8 AN Male with 1/8" Sensor Hole 0000-08-D805 (Optional)



-6 AN Female to -8 Male AN (GearBox) 0000-08-D801 (Optional)



-8 GB Pump Out to GB Cooler in (FLIS - 046) 0000-08-D810 37" (Optional)



-8 GB Cooler Out to GB In (FLIS - 047) 0000-08-D811 100" (Optional)



-8 GB Out to GB Pump In (FLIS - 045) 0000-08-D809 48" (Optional)

## Differential & Gearbox Hose Kit Update

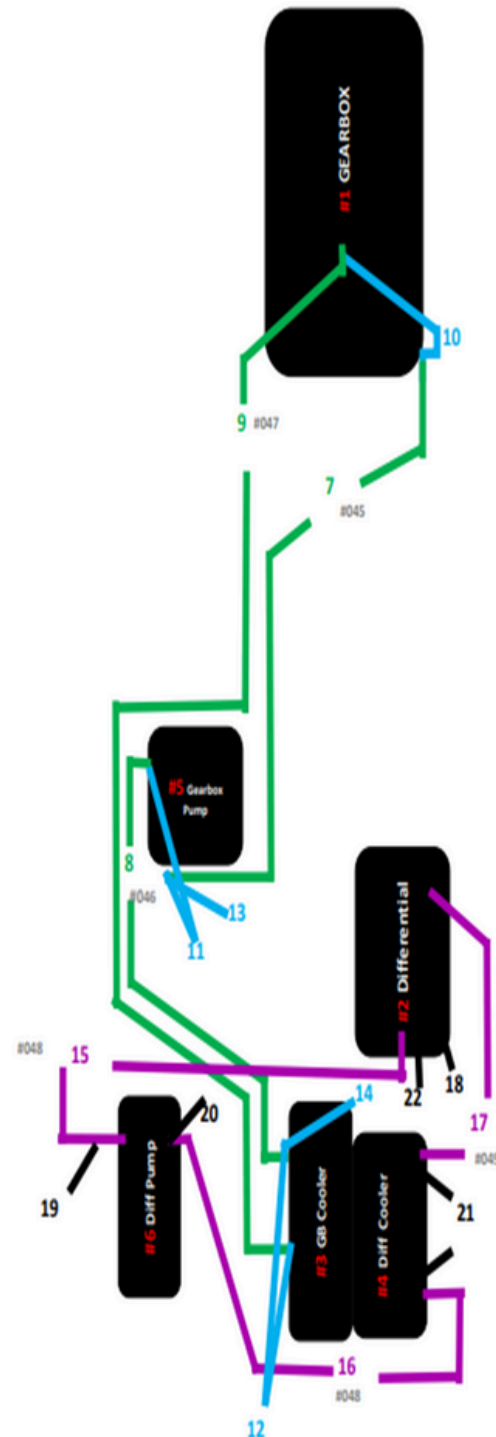
#	Description
1	Gearbox (GB)
2	Differential (Diff)
3	GB Cooler
4	Diff Cooler
5	GB Pump
6	Diff Pump

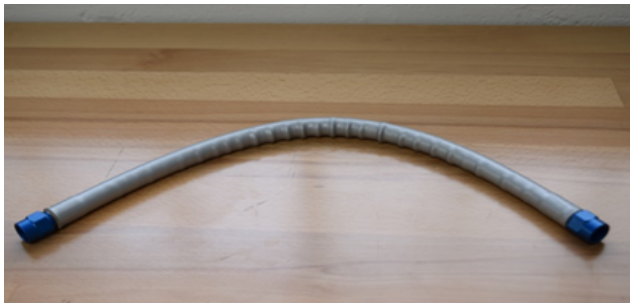
GearBox Hoses		Part #	Length	Fitting	Fitting
7	GB Out to GB Pump In (FLIS - 045)	0000-08-D809	48"	ST	ST
8	GB Pump Out to GB Cooler In (FLIS - 046)	0000-08-D810	37"	ST	90
9	GB Cooler Out to GB In (FLIS - 047)	0000-08-D811	100"	90	90SW

GearBox Fittings		Part #	QTY	Size	Size
10	-6 AN Female to -8 Male AN (GB)	0000-08-D801	2	-6	-8
11	3/8" 90 Deg. NPT to -8 AN (GB Pump)	0000-08-D802	2	3/8" NPT	-8
12	-8 AN Male to 22mm Male (GB Cooler)	0000-08-5014	2	-8	22mm
13	-8 AN Filter	0000-08-D804	1	-8	
14	-8 AN Female to -8 AN Male with 1/8 Sensor Hole	0000-08-D805	1	-8	-8

Differential Hoses		Part #	Length	Fitting	Fitting
15	Diff out to Diff Pump In (FLIS - 048)	0000-08-D812	24"	45	90SW
16	Diff Pump Out to Diff Cooler In (FLIS - 048)	0000-08-D812	24"	45	90SW
17	Diff Cooler Out to Diff In (FLIS - 049)	0000-08-D813	9"	45	90SW

Differential Fittings		Part #	QTY	Size	Size
18	-8 AN Male to 18mm Male (Diff Out)	0000-08-D806	1	-8	18mm
19	3/8" NPT Male to -8 AN Male with 1/8 Sensor hole (Diff Pump)	0000-08-D807	1	3/8" NPT	-8
20	3/8" NPT Male to -8 AN Male (Diff Pump) - (FBM5007)	0000-08-D808	1	3/8" NPT	-8
21	-8 AN Male to 22mm Male (Diff Cooler) - (22-M22AN00-SE)	0000-08-5014	2	-8	22mm
22	-8 AN Filter	0000-08-D804	1	-8	





- 6 Gearbox to Filter Hose  
0000-02-5902-L1



- 6 Gearbox to Pump Hose  
0000-02-5902-L2



- 6 Oil Line, Trans-Filter to Cooler-  
ND2  
0000-08-D211



- 6 Oil Line, Trans-Cooler to Pump-  
ND2  
0000-08-D212



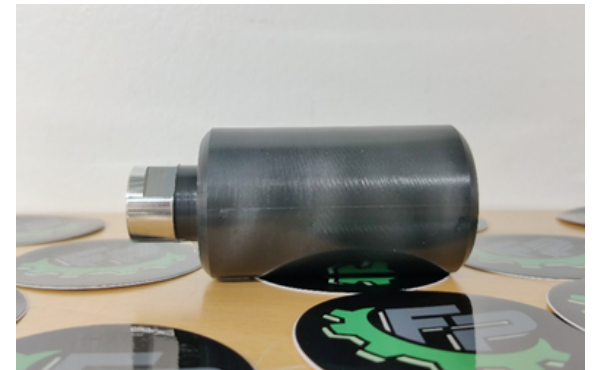
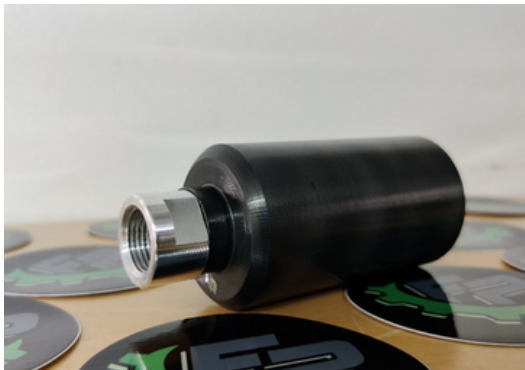
90\* -6 Male to 3/8 NPT Pipe Male -  
Trans Pump  
0000-08-5125



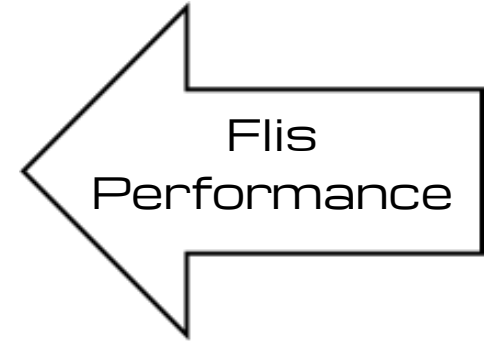
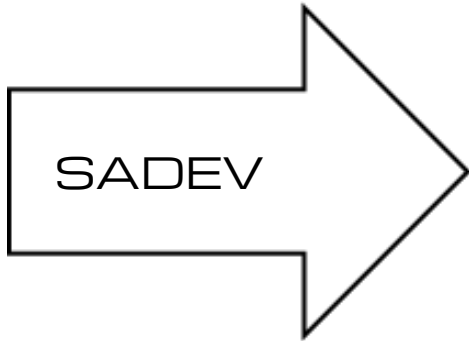
Diff & Trans Oil Filter Housing (one  
each) 0000-02-5606  
Please reference Mazda MX-5 Cup  
Car Technical Service Bulletin  
#2021-04-23 #2  
Optional: Replacement and/or  
Removal of Differential and Gearbox  
Filters  
0000-08-5606



ND2-TSB-2022-12-21 #B - Flis Performance  
Updated SADEV Heat Resistant Shift Knob - Optional



ND2 TSB 2020-08-19 Global MX-5 Cup SADEV Shift Knob Alternative  
OPTIONAL - Superseded By Heat Resistant Shift Knob 2022-12-21



Discontinued





Slave Cylinder -  
0000-02-5116



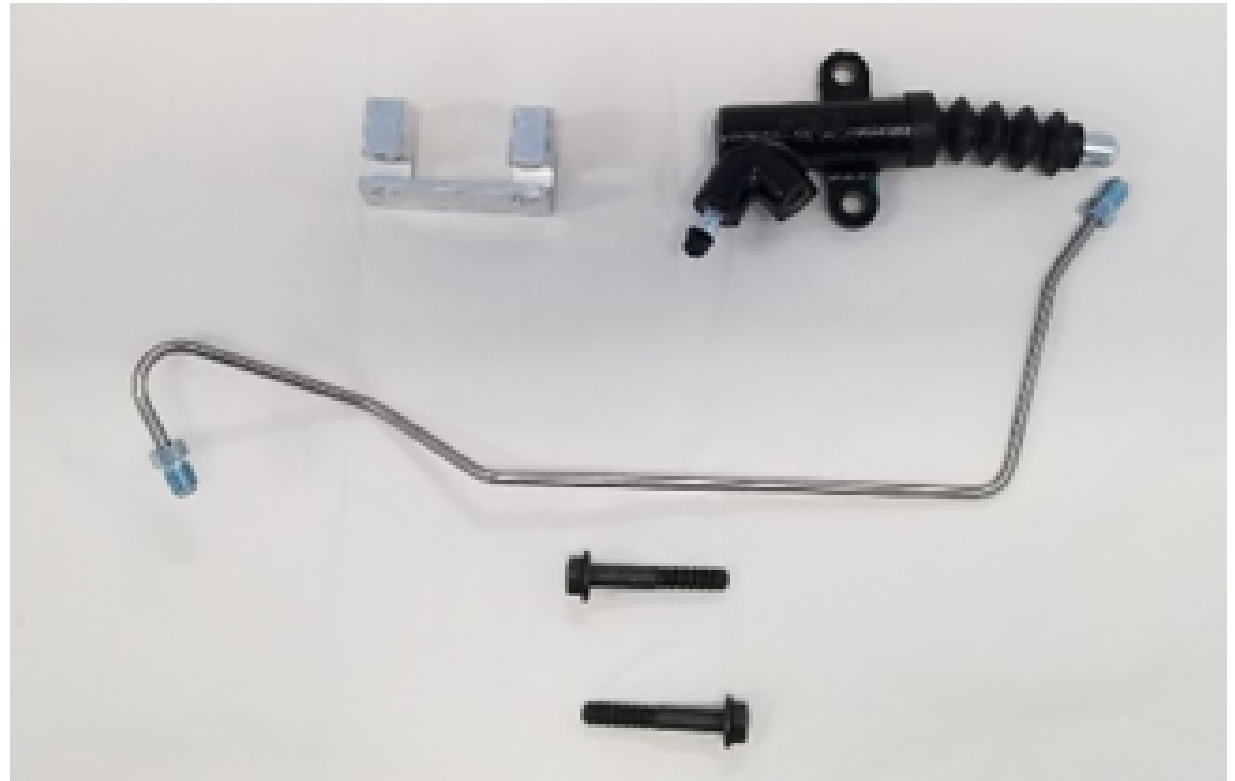
Slave Cylinder Bracket -  
0000-02-5116-BK



Slave Cylinder Line -  
0000-02-5116-LN



Slave Cylinder Hardware -  
0000-02-5116-HD



Slave Cylinder Kit -  
0000-02-5116-KT

17) TRANSMISSION & CLUTCH



Transmission Stud  
0000-02-STUD-GM  
NON-SADEV



Banjo Adapter  
0000-08-5121-  
NON-SADEV



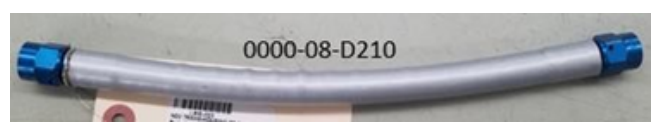
Banjo Bolt  
0000-08-5122  
NON-SADEV



Banjo Bolts Kit (Crush Washer for  
Banjo Bolts and Cooler Lines) 0000-  
08-5123  
NON-SADEV



-6 Male to -8 Female Adaptor  
0000-08-5124  
NON-SADEV



-6 Oil Line, Trans-Housing to Filter-  
ND2  
0000-08-D210 -  
NON-SADEV



Clutch kit 0000-02-5006-SS  
NON-SADEV



Clutch kit 0000-02-5006-SS  
NON-SADEV



-6 Oil Line, Trans-Pump to Housing -  
ND2  
0000-08-D213- NON-SADEV