

ND.2 Mazda MX-5 Cup Homologation Document

Version #18 2025.01.15



Flis Performance, LLC
106 Anita Ave • Daytona, FL 32114
(386)-256-7021
www.FlisPerformance.com

Contents:

ND.2 Mazda MX-5 Cup Homologation Document.....	1
1) General Notes:	3
2) Body	4
3) Brakes	10
4) Cooling.....	13
5) Differential	17
6) Data	21
7) Electrical	22
8) Engine	26
9) Exhaust	28
10) Fluids	29
11) Fuel	31
12) Interior	32
13) Safety Equipment	34
14) Suspension and Suspension Bracing	36
15) Wheels & Tires	44
16) SADEV Gearbox.....	50
17) Transmission and Clutch	60

1) General Notes:

This document will be updated periodically to reflect cumulative changes made to the vehicle specification. A list of all vehicle updates can be found on the Flis Performance web site: <http://flisperformance.com/>

a) All REQUIRED TSB items are also shown in this document, as well as items that are OPTIONAL but still homologated. All parts on vehicle must be stock 2019+ Mazda MX-5 ND2 Chassis parts unless specifically listed in this document. Below is a list of all stock Mazda parts that are added during the assembly process:

- i) Air box Cowl - N244-56-35X
- ii) Sealed Differential - 0000-02-MS14-KT or 0000-02-MS14-SD (for SADEV)
- iii) Brake calipers - 0000-03-5423 - Please refer to ND2-TSB-2022-12-21 #A - Mazda MX-5 Cup Brembo Brake Package and PAGID Brake Pads - Required
- iv) Brake caliper pins - 0000-03-5423 - ND2-TSB-2022-12-21 #A - Mazda MX-5 Cup Brembo Brake Package and PAGID Brake Pads - Required
- v) 2016-2018 Flywheel-PEES-11-500
- vi) 2016-2018 Flywheel Lock Bolt-LF01-11-511
- vii) 2016-2018 Front Clutch Cover- PE01-16-220
- viii) Filter Body for Oil Filter- PEES-14-311
- ix) Oil Filter Body Gasket - PEES-14-1342
- x) Modified Stock Parts are shown in Section 18

b) The only allowed end user modifications to the car are installation of the following:

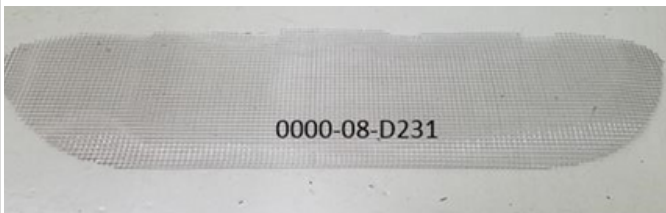
- i) FIA approved seat and seat side mounting brackets
- ii) FIA approved safety belts
- iii) Welding of additional brackets to the Shoulder Belt Bar for Safety Belt Attachment is no longer be allowed. Please reference ND2-TSB-2022-01-13 #C - Shoulder Belt Extension Bracket - Optional
- iv) Interior rear-view mirror
- v) Steering wheel

c) Allowable adjustments to the car are:

- i) Tire air pressure
- ii) Front anti-roll bar end link positions
- iii) Front and rear anti-roll bar end link lengths (Option of Disconnecting Sway Bars and method of securing components found in TSB #2022-01-13 #D)
- iv) Ride height and rake (Per sanctioning organization ground clearance) via spring perches
- v) Damper compression and rebound
- vi) Front and rear toe
- vii) Front and rear camber
- viii) Caster

If it is not specifically listed above, no other adjustments, polishing, deburring, or modifications of any kind are allowed.

2) BODY



Screen, Radiator-ND2
0000-08-D231



Grill, ND2
0000-08-D208



Hood / Trunk Release Wire Crush
Sleeve
(front/rear access)
0000-08-5021



Hood / Trunk Release Wire
(front/rear access)
0000-08-5025



Front and Rear Tow Hooks
0000-04-5996-SH



Fascia Support (Left Front)
0000-07-5811-LF



Fascia Support (Right Front)
0000-07-5810-RF



Fascia Support (Left Rear)
0000-07-5813-LR



Fascia Support (Right Rear)
0000-07-5812-RR



Fascia Support Frame Bracket
(Left Rear)
0000-07-5815-LR

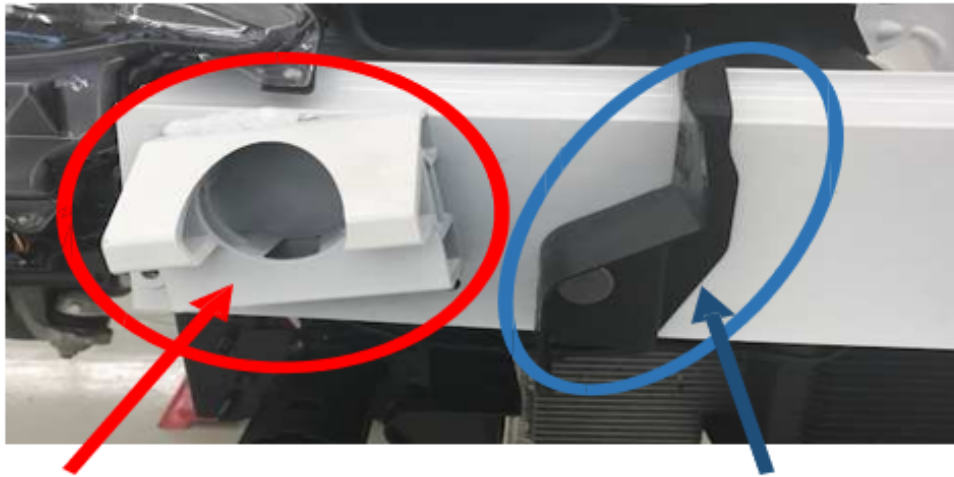


Fascia Support Frame Bracket
(Right Rear)
0000-07-5814 - RR



Fascia Support Weld Bungs
0000-07-5816

ND2-TSB-2023-01-10 - Flis Performance High Energy Bumper
Insert - Required



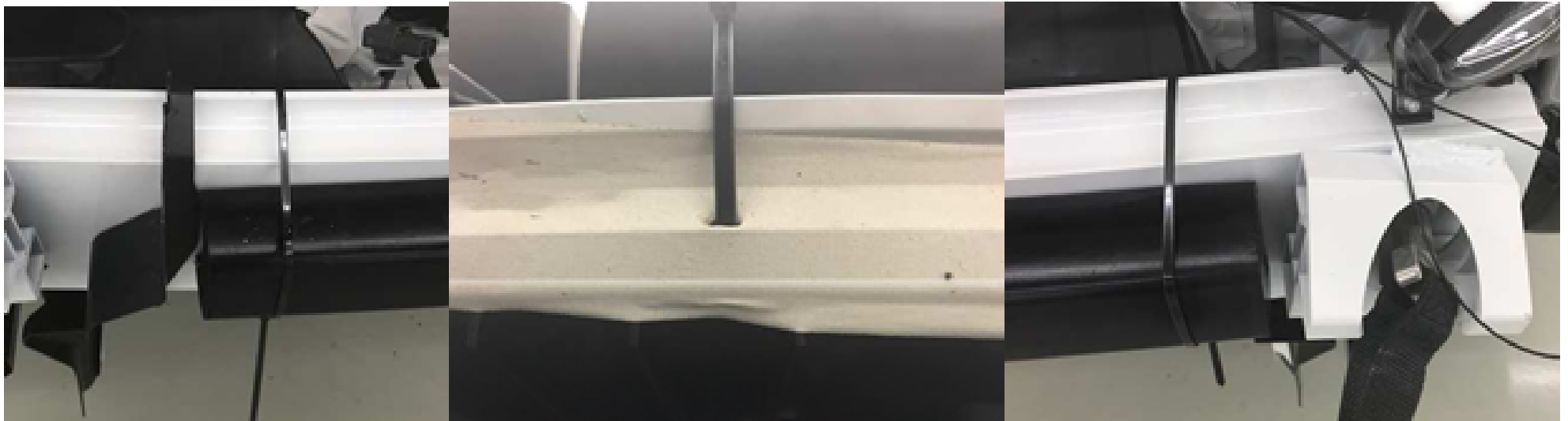
Right & Left protrusions that must be removed

Air Guide that must be removed



High Energy Bumper Insert
FPFTBUMPSPT

Superseded by High Energy Bumper Insert
FP3LTRLFL



Single piece of FIA Type A roll bar padding, 30mm thick to fit 1 3/4" - 2" bar diameter

FOAM INSERT

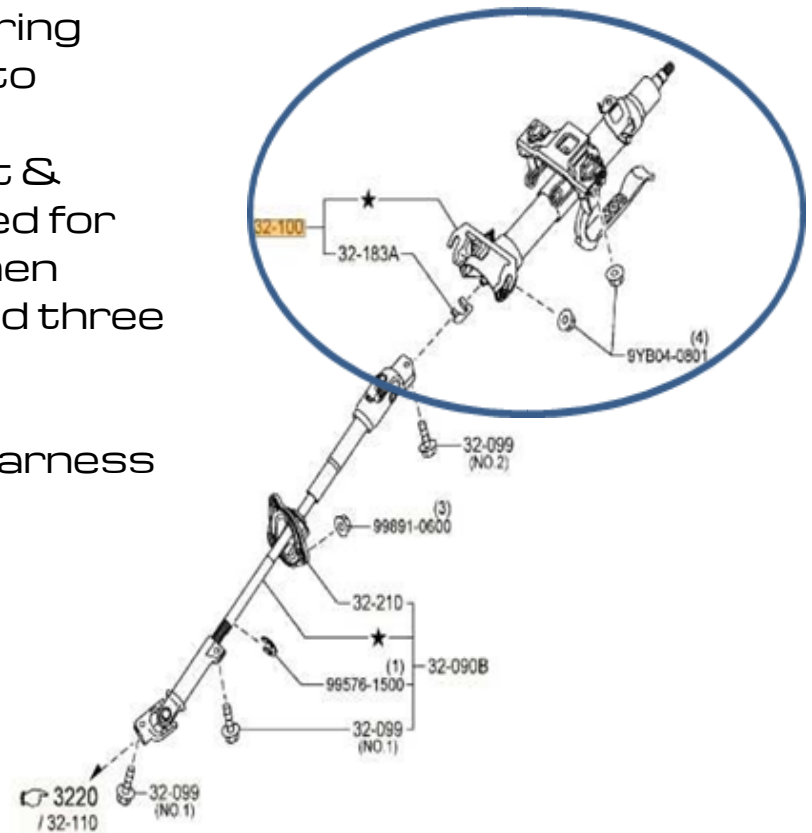
a. You may install a single piece of FIA Type A roll bar padding, 30mm thick to fit 1 3/4" - 2" bar diameter (with trapezoidal profile) between the air guide and the tow hook. Use wire ties around the bumper beam and only cut the minimum size slit to pass the wire tie past the tape which is under the bumper beam. Please note that the picture below still has the protrusion around the tow hook, and once removed the foam may be installed up to the tow hook mounting hole



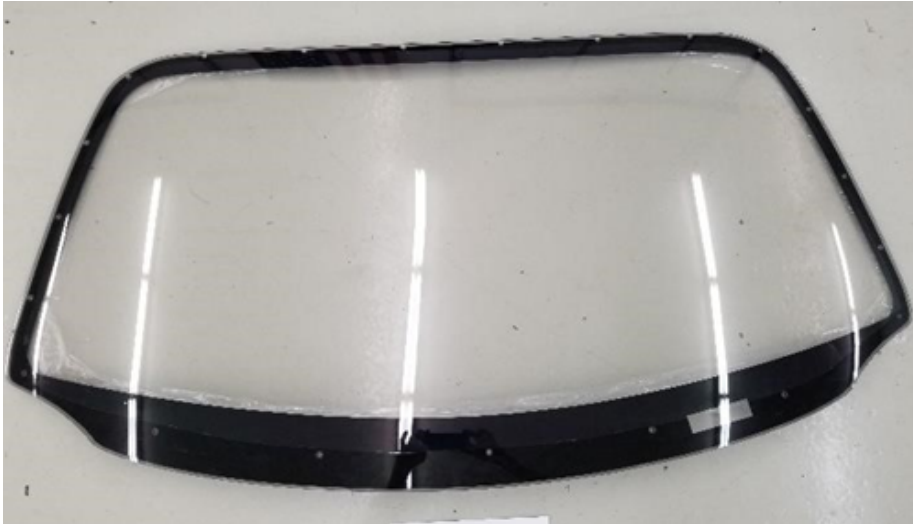
Optional changes to the Mazda MX-5 Cup Car steering column with the addition of the telescoping feature to assist with driver comfort.

1. Part number ND6N-32-100 (2019+ Model year tilt & telescoping steering column) may now be substituted for NA1J-32-100 (2016 - 2018 tilt steering column). When updating to the 2019 + style column, you will also need three additional parts. Mazda part numbers:

- a. 0000-08-D230 Updated MXL2 mount
- b. 0000-08-D234 Modified start/stop wiring harness
- c. 0000-08-D235 Fire bottle line



ND1 and ND2
Polycarbonate-Windscreen-OPTIONAL



Polycarbonate Windscreen
0000-07-5116-PT



Brace
0000-07-5116-BR



Trim dash to allow clearance for
windshield brace and bracket.



Bend up factory metal bracket on
dash bar to allow clearance for brace
bar clamp.



Attach brace support bracket to
dash bar

3) BRAKES

NOTE: Brembo Front Brake Kit (0000-03-5423) & PAGID Brake Pads (0000-03-5106-61/0000-03-5116-29) are **required** for the Mazda MX-5 Cup Series Only



PAGID Front Brake Pads (MX-5C Required)
0000-03-5106-61



PAGID Rear Brake Pads (MX-5C Required)
0000-03-5116-29



Brembo Front Brake Kit (MX-5C Required)
0000-03-5423



Brembo Front Brake Kit (MX-5C Required)



Brembo Front Brake Kit (MX-5C Required)



Brembo Front Brake Kit (MX-5C Required)



Brembo Front Brake Kit (MX-5C Required)



Brembo Front Brake Kit (MX-5C Required)



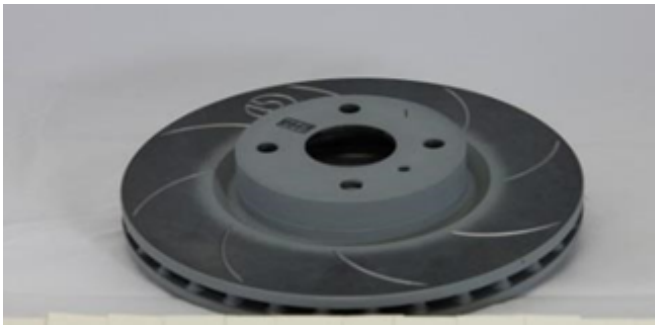
Brake Pads (Front)
Superseded by 0000-03-5106-61
0000-03-5106-03



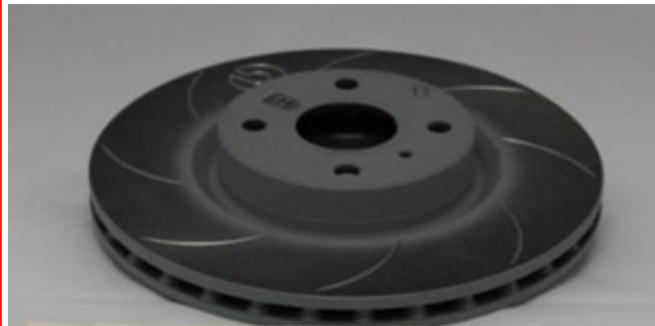
Brake Pads (Rear)
Superseded by 0000-03-5116-29
0000-03-5116-44



SS Brake Lines
0000-03-5213



Rotors LF
Superseded by 0000-03-5423
0000-03-5406-LT



Rotors RF
Superseded by 0000-03-5423
0000-03-5406-RT



Brake Duct Clamps
0000-03-5601-CL



2" Brake Duct Hose
0000-03-5601-HS (Single 34")



(Dual) 2" Brake Duct Hose
0000-03-5601-HS (Dual 39")
(Optional)



(Dual) 2" Brake Duct Hose
0000-03-5601-HS-A (Dual 39")
(Alternative - Optional)



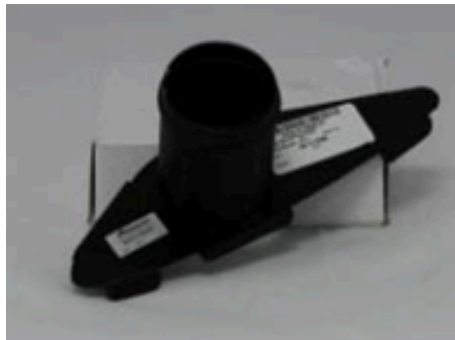
Brake Duct Backing Plate (left)
0000-03-5601-LT



Brake Duct Backing Plate (Right)
0000-03-5601-RT



Single Brake Duct Nozzle (Fascia-
Left) 0000-07-5808-LT



Single Brake Duct Nozzle (Fascia -
Right) 0000-07-5808-RT



Dual Brake Duct Fog (Fascia-Left)
0000-03-5601-LTDL (Optional)



Dual Brake Duct Fog (Fascia-Right)
0000-03-5601-RTDL (Optional)



Dual Brake Duct Flange (Left) 0000-
03-5601-BKLT (Optional)

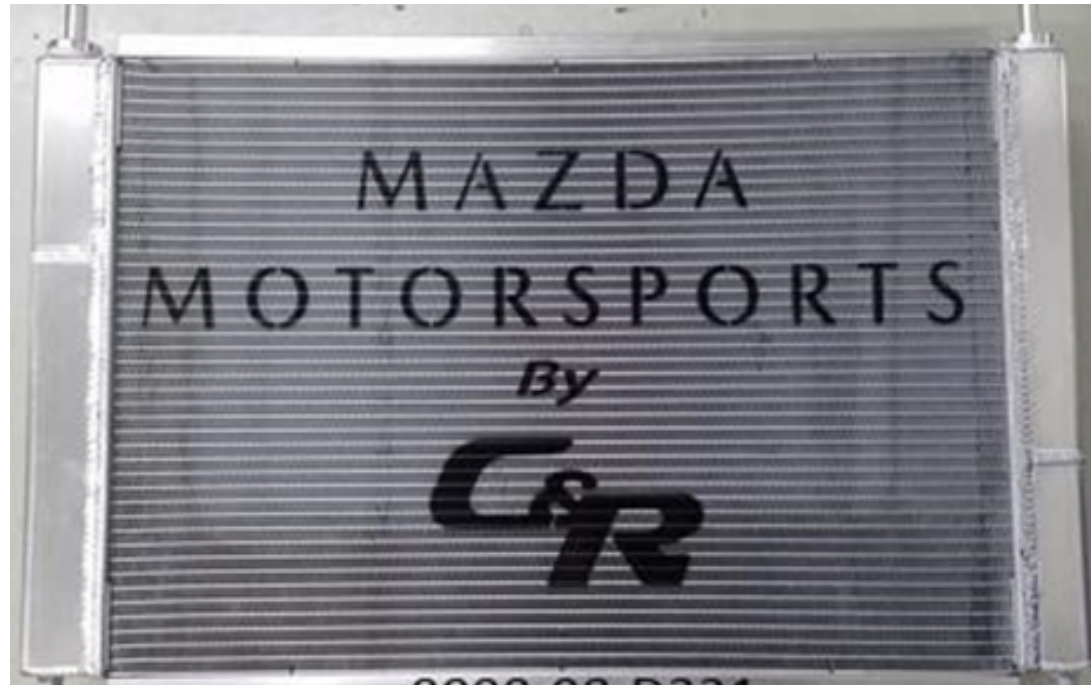


Dual Brake Duct Flange (Right)
0000-03-5601-BKRT (Optional)



Dual Brake Duct Kit (Optional)
0000-03-5601-DLKT

4) COOLING



Radiator-ND2 Tank width 2-9/16" Thick)
0000-08-D221



1.75"x24" Flap Trim (Radiator)
0000-01-566B



Duct, Radiator-Left-ND2
0000-01-5662-LT



Duct, Radiator-Right-ND2
0000-01-5662-RT

ND2-TSB-2020-08-31-Global-MX-5-Cup-Cooling-
Management-Tools-Revised-From-2019-05-23-TSB

Must use 16 psi, 19 psi or
30 psi radiator cap from
Mazda Motorsports or
Flis Performance

ND2-TSB-2022-04-14 -
Radiator Cap Safety Wire
Update - Optional

Competitors are solely
responsible for attaching
the safety wire properly. If
the wire is attached to the
upper water hose clamp,
we encourage
competitors to ensure the
clamp is tight. We have
seen teams that have not
tightened the clamp
properly and this resulted
in upper hose failure.



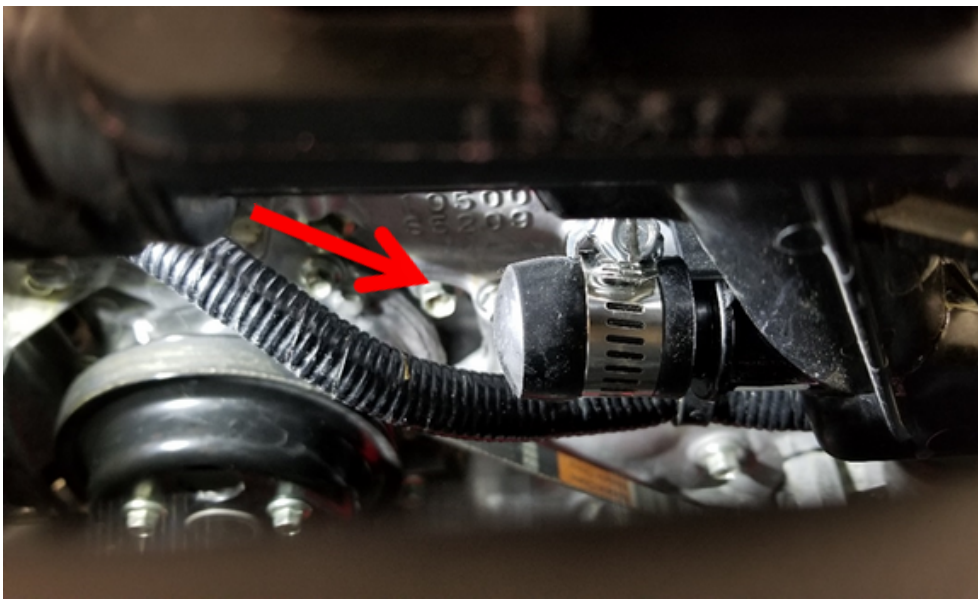
C&R High Pressure Radiator Cap
0000-08-D236 -16LBS



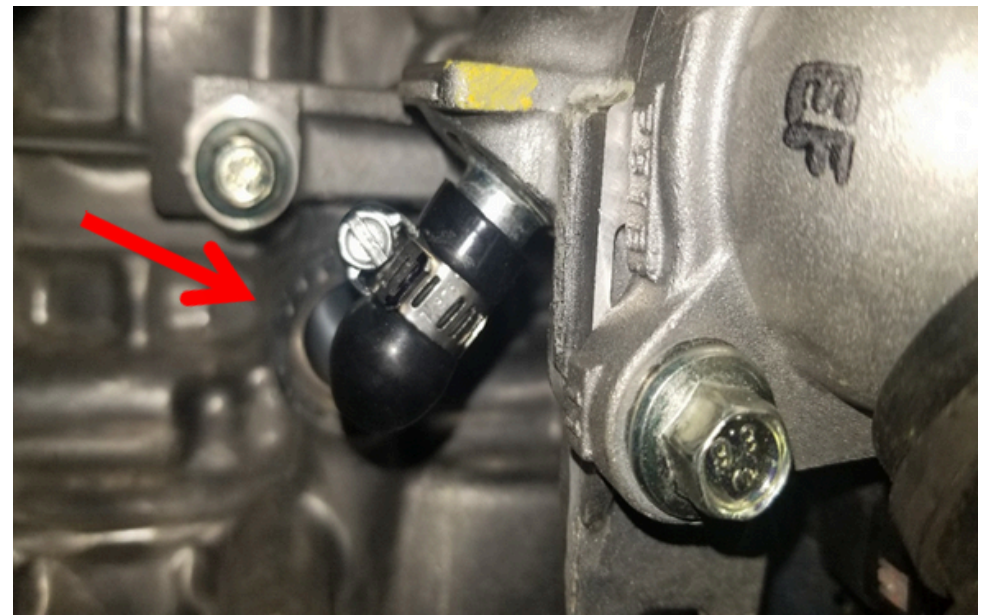
C&R High Pressure Radiator Cap
0000-08-D236 - 19-21LBS



C&R High Pressure Radiator 30 LB
Cap 0000-08-D242 -30LBS



·Place 1/2 inch cooling system bypass cap (Mazda Part - 0000-08-D237) onto cap housing nipple. Secure with Hose Clamp.



·Place 3/8 cap (Mazda Part - 0000-08-D237) on Thermostat/Water Pump Housing Nipple. Secure with Hose Clamp.



Radiator Foam
Type of Foam Used Is Open.
Two Pieces Required



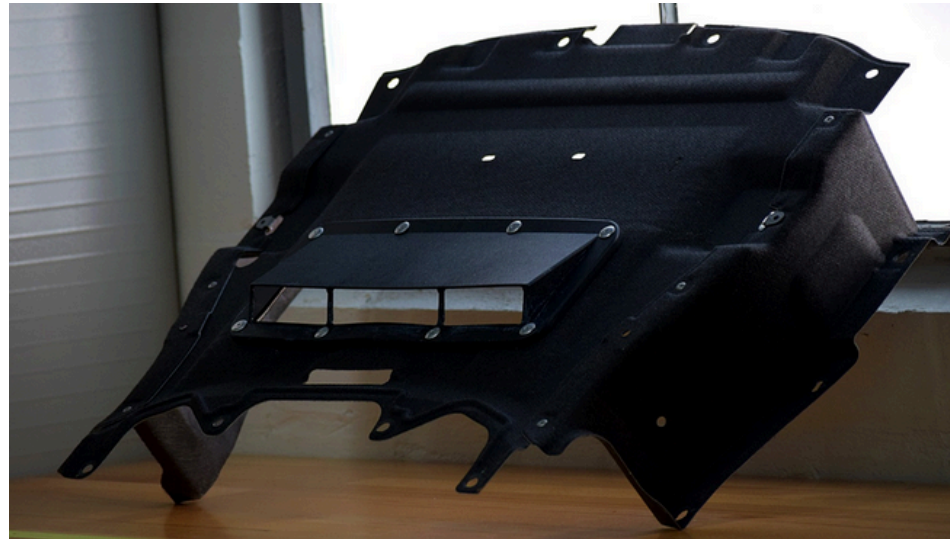
Type of Adhesive Used Is Open
Cut Foam to Fit Gaps Between Floor
and Bottom of Radiator



Foam Fitment and Installation



Use of White Gaffer Tape Required
Taping of Duct Work is open. Tape Up Gaps and Seams in Radiator Ducting



Diffuser - Optional - TSB-2020-08-31-Global-MX-5-Cup-Cooling-Management-Tools-Revised-From-2019-05-23-TSB-0000-08-D243

5) DIFFERENTIAL



DIFFERENTIAL-SEALED
0000-02-MS14-SD



Diff Cover, Top with -6
0000-08-5033



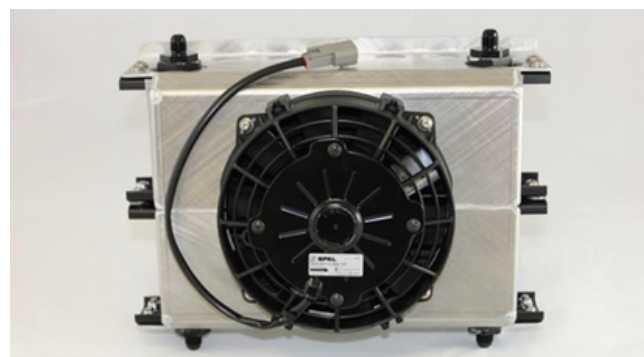
Diff Cover, Bottom with
Temperature Sensor
0000-08-5033



Diff & Trans Oil cooler (one each)
0000-02-5600



Differential Bushing Inserts
0000-04-5901



Diff & Trans Oil Cooler Shroud with
Fan - Top View
0000-08-5012-KT



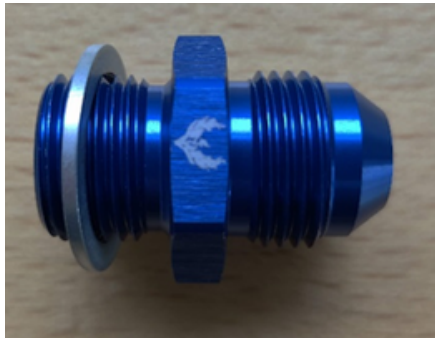
Diff & Trans Oil Cooler Shroud with
Fan - Bottom View
0000-08-5012-KT



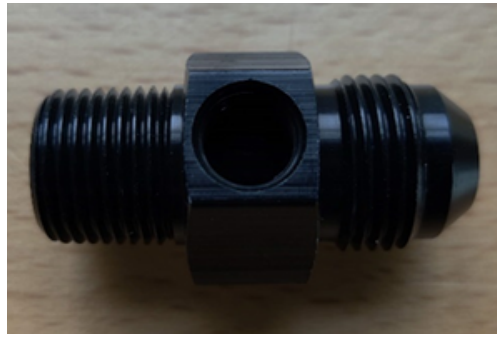
Diff & Trans Fluid Transfer Pump
with Viton Seals (one each)
0000-08-5031



Diff Pump Bracket Welded to Left
Rear Frame
0000-08-5034



-8 AN Male to 18mm Male (Diff OUT)
0000-08-D806 (Optional)



3/8" NPT Male to -8 AN Male with
1/8" Sensor Hole (Diff Pump)
0000-08-D807 (Optional)

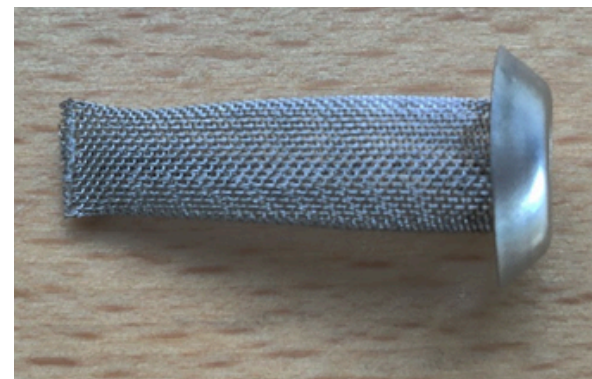


3/8" NPT Male to -8 AN Male (Diff
Pump)
0000-08-D808 (Optional)



Engine oil cooler fittings m22- an8
0000-08-5014

Can be used for -8 Line Update



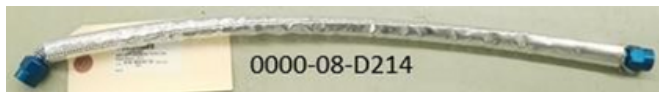
-8 AN Filter
0000-08-D804 (Optional)



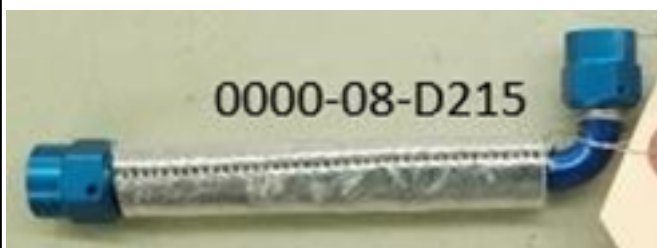
-8 Diff out to Diff Pump In (FLIS - 048)
24" 0000-08-D812 (Optional)



-8 Diff Cooler Out to Diff In (FLIS -
049) 9" 0000-08-D813 (Optional)



-6 Oil Line, Diff-Housing to Filter-ND2
0000-08-D214



-6 Oil Line, Diff-Filter to Cooler-ND2
0000-08-D215



-6 Oil Line, Diff-Cooler to Pump-ND2
0000-08-D216



-6 Oil Line, Diff Pump to Housing-ND2
0000-08-D217



Diff & Trans Oil Cooler Fittings
Only for -6 Lines
0000-02-5603



-6 Male to 3/8 NPT Pipe Male Diff
Pump
0000-08-5030

6) DATA



AiM MXL2 Data Logger w/GPS
0000-10-9303 - **Superseded by**
AiM MXS 1.3



AiM MXS 1.3 Data Logger w/GPS



AiM 22 Pin Harness for MXL2
0000-10-9304



Shaft Collar 1.75", MXL2 Mount-ND2
0000-08-D230



AiM 3.5m Patch Cable
0000-10-9305



AiM PT-100 Temp Sensor for
differential, transmission and engine
oil temp.
0000-10-9306

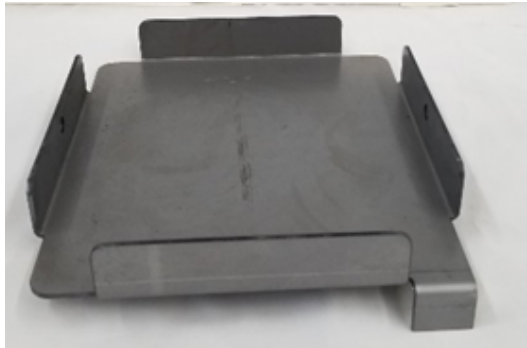


Water Pressure Sensor
(Superseded by 0000-01-5662-WP)



Water Pressure Sensor Kit -
0000-01-5662-WP

7) ELECTRICAL



New Battery Tray
0000-08-5043-HL



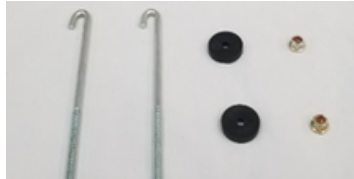
Adaptor, Tray (Optional) ND2
(Superseded by 0000-08-5043-HL)
0000-08-D202



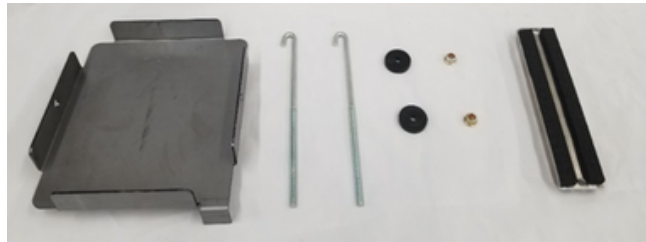
Odyssey Battery
0000-08-5043



New Battery hold down
0000-08-5043-CL



Hold Down Hardware
0000-08-5043-HD



Upgrade Battery Kit
0000-08-5043-KT



ECU, Bosch MS6 Cup - ND2
0000-08-D227



Mount Assy, ECU W/Dual Lock-ND2
0000-08-D228



Mount Assy, ECU Adapter
0000-08-D204



Adaptor Harness, ECU-ND2
0000-08-D203



Braille Battery - Optional Orders & Part Numbers:

The Braille Battery components **MUST** be ordered through Scott Kaluza with Mazda Motorsports.

"All orders will have to be processed as a drop ship and be emailed to Scott Kaluza (SKaluza@mazdausa.com) with the **SUBJECT** of the email being "Braille battery drop ship order/MX-5 Cup."

Email Drop Ship Order **EXAMPLE:**

To: SKaluza@mazdausa.com

Subject: "Braille battery drop ship order/MX-5 Cup"

Battery Only: 0000-10-9601 - G30 Battery individual

Charger Only: 0000-10-9602 - TM393 Charger individual

Battery & Charger Combo: 0000-10-9600 - G30C Combo



Sensor, O2-Bosch LSU 4.9-ND2
0000-08-D226



Nut, Cage Ground M8-ND2
0000-08-0D206



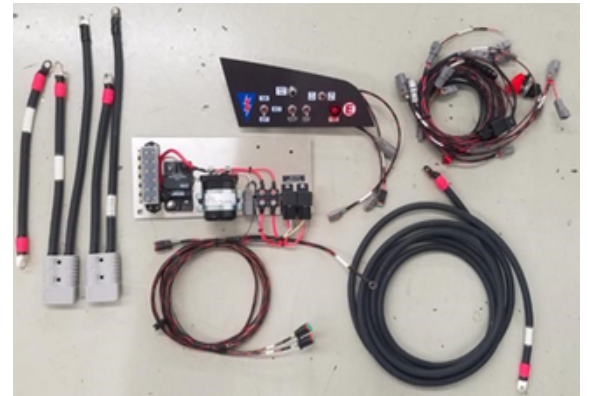
Stud, Cage Ground M8x20-ND2
0000-08-0D205



Power Distribution Block -
0000-08-5150



Harness, Start/Stop
0000-08-D234



Fliis Performance Wiring Kit



Switch Panel Close-up
0000-08-D241



Switch Panel, Back Side
0000-08-D241



Rear Power Distribution Panel View
0000-08-D238



TR2 Transponder
0000-08-5044-TR2



Superseded By - 0000-08-5044-TR2
AMB Flex Transponder
0000-08-5044



Speed Limiter, Pit Lane-ND2
0000-08-D233



MPI Single External Button Holder:
0000-10-5660-1B



MPI Dual External Button Holder:
0000-10-5660-2B

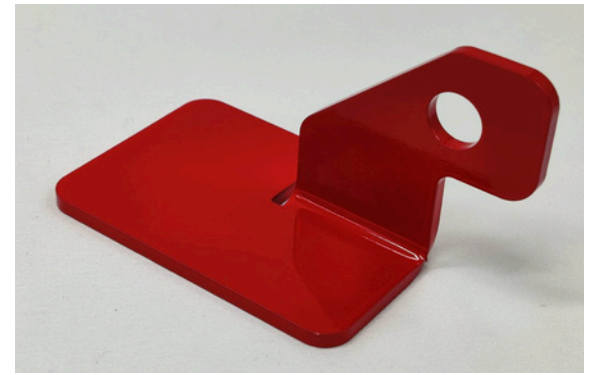
8) ENGINE



Oil filter Sandwich Plate
0000-01-5600-KT



Vacuum Control Unit Bracket
68_Vac_CNTRL_BKT



Engine Mount Reinforcement
Bracket Left
0000-02-5702-LT



Engine Mount Reinforcement
Bracket Right
0000-02-5702-RT



Engine Bracket Left
0000-02-5712-LT



Engine Bracket Right
0000-02-5712-RT



Bosch Throttle Body Kit
0000-08-D200

SKYACTIV-G (Non-turbo) Filters

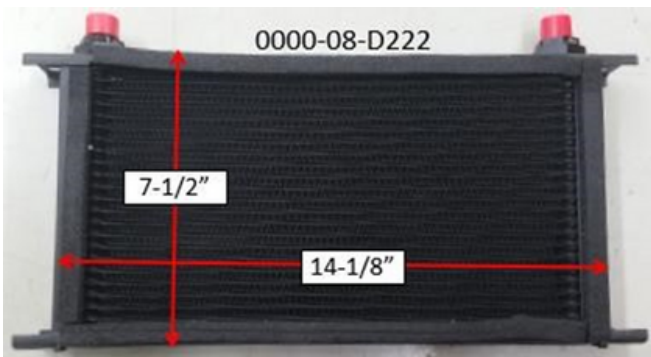
PE01-14-302A or B

PE01-14-302A -MV

1WPE-14-302



ONE BAND



Oil Cooler SET 925-ND2
0000-08-D222



Bracket, Oil Cooler-Short-ND2
0000-08-D225



Engine oil cooler fittings m22- an8
0000-08-5014

Can be used for -8 Line Update



Mounting Hardware and Foam,
Diff/Trans Cooler-ND2
0000-08-D209



Line, Oil Cooler-Long-ND2
0000-08-D223



Line, Oil Cooler-Short-ND2
0000-08-D224



Zip Ty Saddles - Optional
0000-08-5045

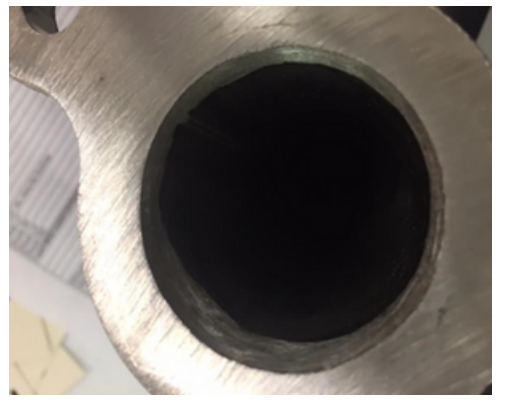
9) EXHAUST



Header
0000-06-5410



Header
0000-06-5410



Header
0000-06-5410



Header
0000-06-5410



Header
0000-06-5410



Mid Pipe
0000-06-5430



Muffler (Non-MX-5 Cup Series)
0000-06-5440-01



Muffler (Non-MX-5 Cup Series)
0000-06-5440-01



Muffler Delete Pipe (Required)
FLIS_MFLR_DLT

10) FLUIDS



Idemitsu Pro Racing Engine Oil Full
Synthetic 5W-40
Part Number: 0000-MS-5w40-QT



Idemitsu Pro Racing Gear Oil 75W-90
Part Number: 0000-MS-7590-QT

Idemitsu Pro Racing Gear
Oil 75W-90
0000-MS-7590-QT

SADEV is approximately 2
quarts (Dry System: New
installation including lines
and coolers) (1.5 quarts for
Wet System)

H-Pattern Transmission is
approximately 5 quarts,
and differential is
approximately 2 quarts.

NON- SADEV

(Brake Fluid Brand - OPEN)

To run the Mazda MX-5 Cup Series, the Brake Fluid must meet the performance requirements of DOT 4 OR HIGHER



Engine Coolant
0000-08-5028



Mo Cool by Motul
0000-08-5028-MC

11) FUEL



Fuel Vent Hose, 1/4"
0000-08-5059



Fuel Tube Hose Clamps
0000-08-5060



Fuel Tube, 1" Stainless Steel
0000-08-5061



Fuel Tube, 1" I.D x 6" Length Tygon
Tubing
0000-08-5062



Fuel Pump Out Kit 0000-06-5210
Only **RED** fuel tee is allowed, black tee
must NOT be used

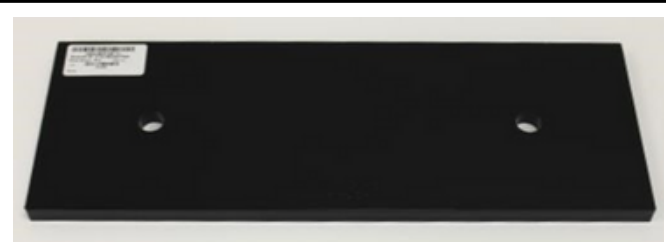
12) INTERIOR



Ballast box
0000-08-5053



5 lbs Ballast Plate (1/4" Steel)
0000-08-5128-05



10 lbs Ballast Plate (1/2" Steel)
0000-08-5128-10



Floor Pan Bolts, M6 x 1.0 x 16mm Flat
Allen
0000-08-5058



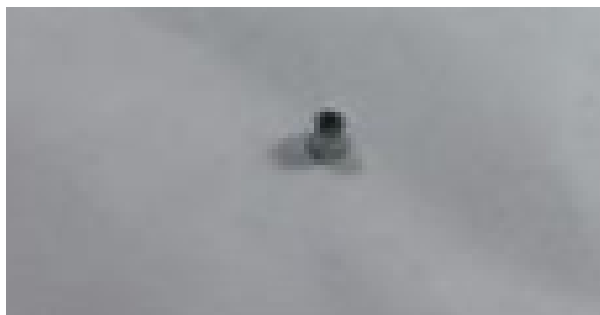
1.15Kg Ballast Plate
0000-08-5128-1.1K-JP



1.15Kg Ballast Plate
0000-08-5128-1.1K-JP



Bulk Head Fastener, M4 Flat Washer
0000-08-5064



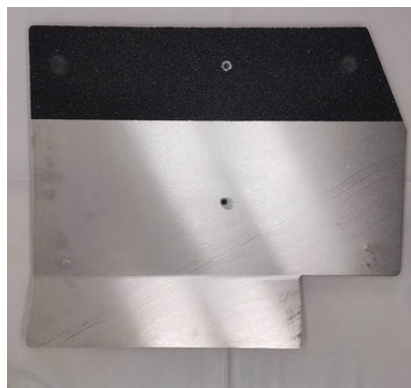
Bulk Head Fastener, M4 Nyloc Nut
0000-08-5065



Bulk Head Fastener, M4 x 12mm
0000-08-5066



Dead Pedal Assembly, 1/8" Steel
Plates
Welded to Stock Panel
0000-08-5074-ASM



Floor Pan, 1/8" Aluminum
0000-08-5076-LT



Rear Bulk Head Center, 0.063" AL
0000-08-5078



Rear Bulk Head Fuel Cover, 0.063" AL
0000-08-5079



Rear Bulk Head Left, 0.063" AL
0000-08-5080



Rear Bulk Head Right, 0.063" AL
0000-08-5081



Steering wheel adaptor
0000-08-5083



7/8 Grommet, Bulkhead,
0000-08-5095

Roll cage 0000-08-5082

(See FIA Homologation
Safety
Cage Certificate, IMSA
20150723_MAZDA_MX-5)

13) SAFETY EQUIPMENT



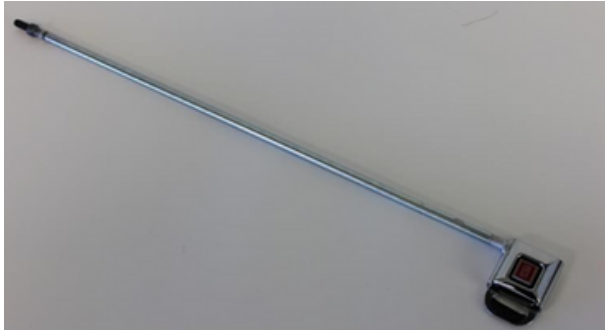
Driver Door Net Mounting Heim
0000-08-5099



Driver Door Net Mounting Jam Nut
0000-08-5100



Driver Door Net Mounting Nut
(Nyloc)
0000-08-5101



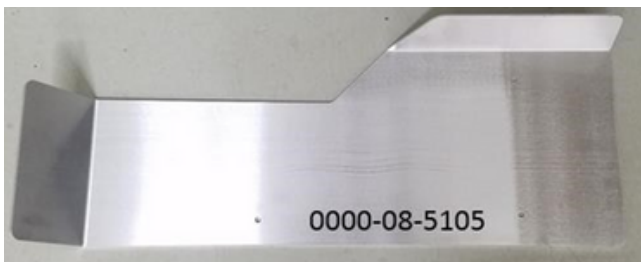
Driver Door Net Rod Assembly
0000-05-5102



FIA Compliant Driver Door Net
0000-08-5097



Fire System
FP3LTRLFL



Leg Brace / Wire Cover Panel
0000-08-5105



Right Side Net
0000-08-5106



Fire system -
(Superseded by 0000-08-5103-2)
0000-08-5103



Bracket, Fire Bottle w/Clamps
ND2
0000-08-D201



Fire bottle line -
0000-08-D235



Leg Brace Stand-Off (Rear)
0000-08-5131



Leg Brace Stand-Off (Front)
0000-08-05130



Seat Mount Baseplate
0000-08-5111-LT



Roll Bar Padding
0000-08-5107



Flis Performance Shoulder Belt Extension
Bracket (Part #0000-08-5110-FPSH) Optional

14) SUSPENSION AND SUSPENSION BRACING



Lower Strut Tower Brace JIS Nut
0000-08-5112



Upper Strut Tower Brace Flanged Nut
0000-08-5113



Strut Tower Brace
0000-04-5626



Strut Tower Brace
0000-04-5626



Strut Tower Brace
0000-04-5626



1.25" Front Sway Bar Bushings
0000-04-5606BS



Front Sway Bar
0000-04-5606-FT

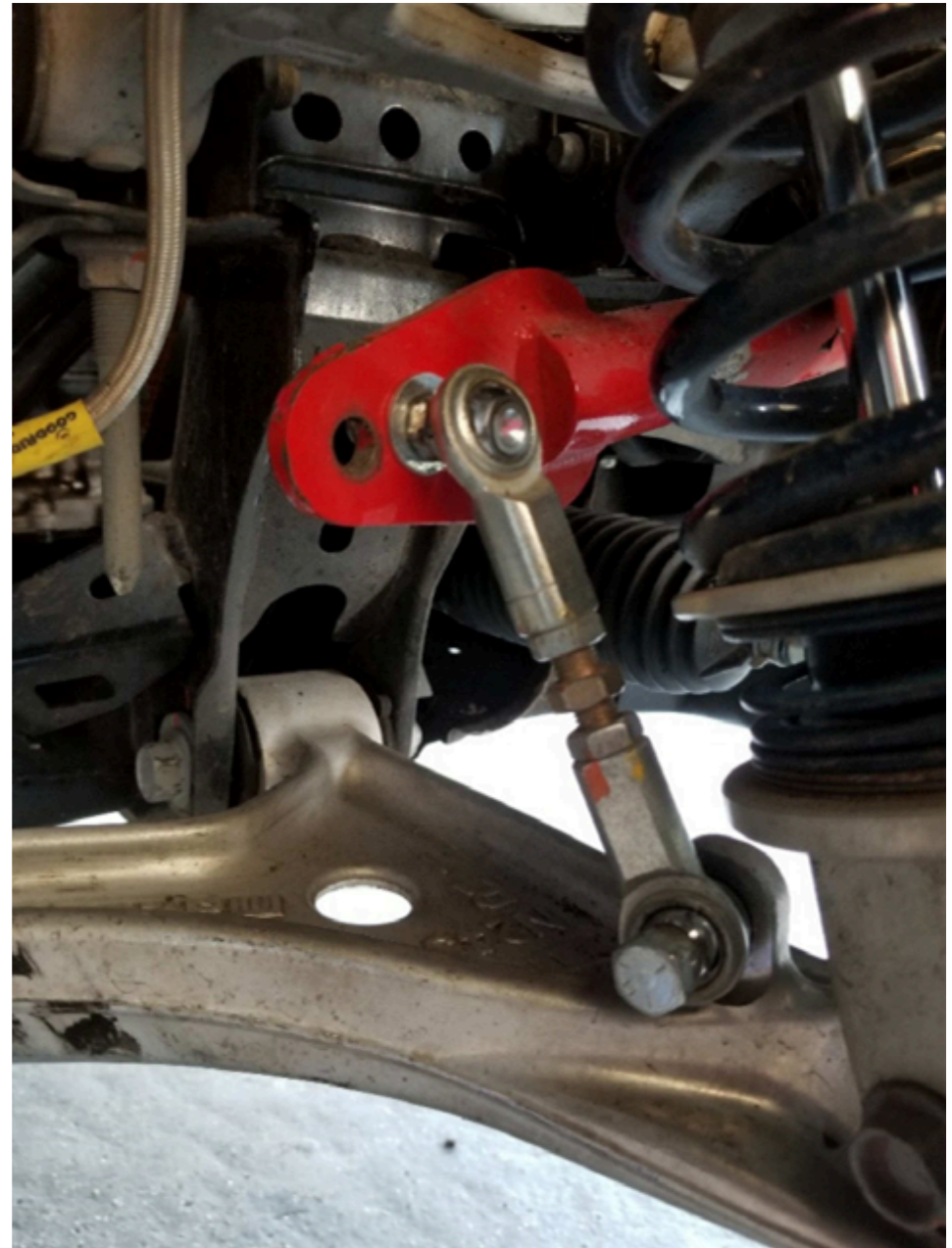


Front Sway Bar
0000-04-5606-FT

ND1-TSB-2017-05-23-Sway-Bar-
Mount-Washer-OPTIONAL

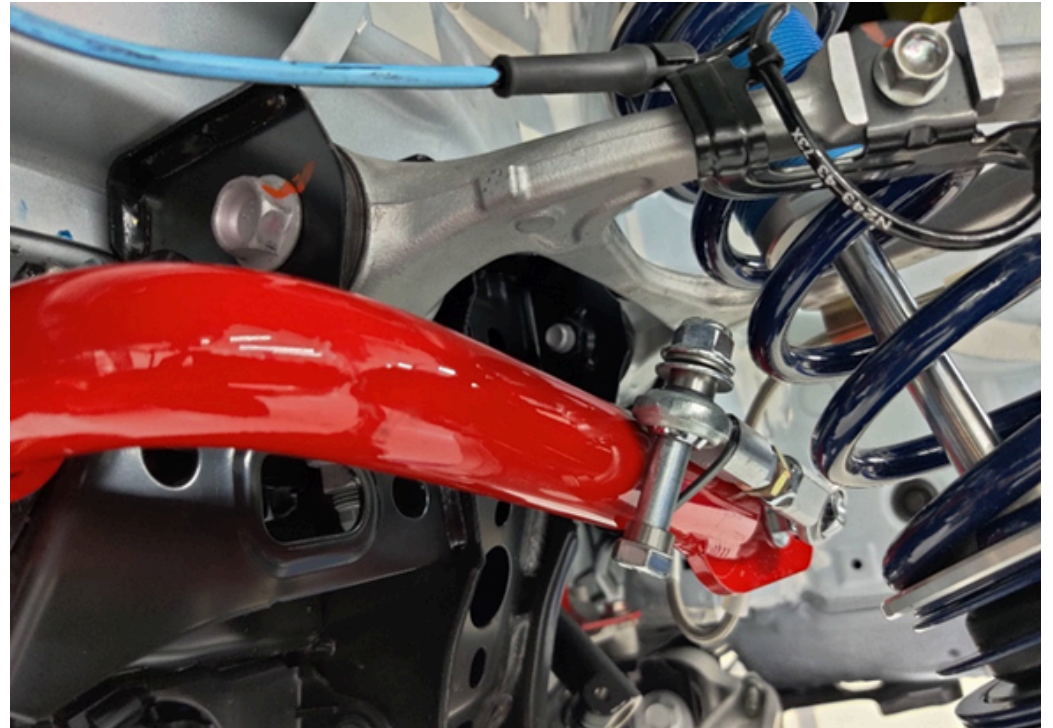
Sway Bar End Links - Front
0000-04-5495

The front sway bar end link attachment washers' sequence, may be altered from how the car was delivered which are 4 in total per side of the car. The total number of four washers may not change per side, but their location (top to bottom or bottom to top) may. The homologated washer is still the only allowed washers.



Mazda MX-5 Cup Car Technical Service
Bulletin #2022-01-13 #D Optional:
Disconnecting of Sway Bars

This TSB describes:
Disconnecting Sway Bars
and method of securing
components. To allow
additional suspension tuning
in the interest of
competition and
performance, teams will be
allowed to disconnect front
and/or rear sway bars.
However, all sway bar
components including but
not limited to end links,
washers, and hardware
must remain on the vehicle
during all on track sessions.
End links must be securely
attached at all times. (See
the picture below of one
method used to secure the
end links.)

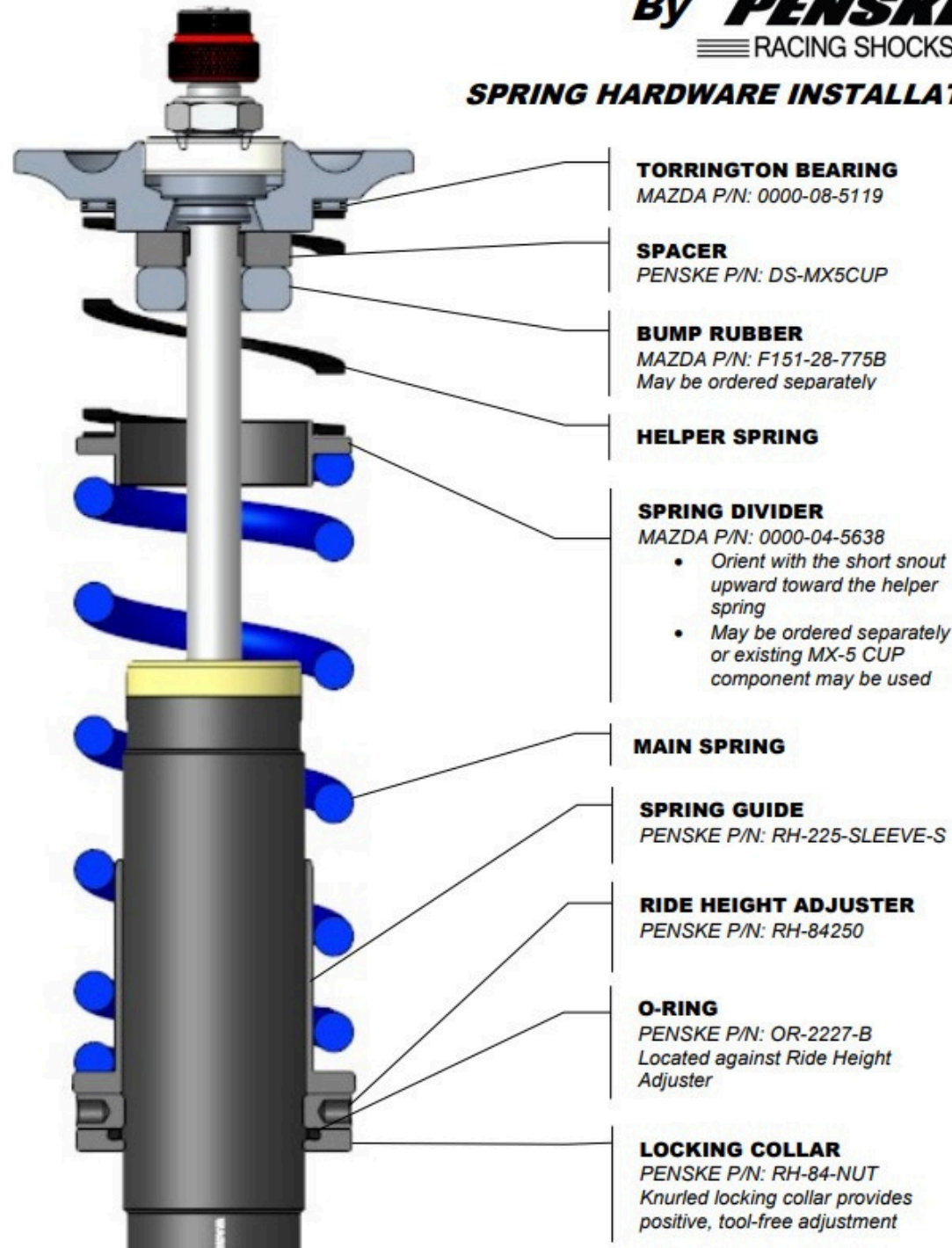


Homologated for
the Mazda MX-5
Cup Car series
only

MAZDA MOTORSPORTS

By **PENSKE**
RACING SHOCKS

SPRING HARDWARE INSTALLATION



MAZDA MOTORSPORTS

By PENSKE

≡ RACING SHOCKS ≡

MOUNT ASSEMBLY

MOUNTING PLATE

FRONT PENSKE P/N: HG-MX5CUP-F, 3 bolt
REAR PENSKE P/N: HG-MX5CUP-R, 2 bolt

M10 x 1.25 STUDS

For use with stock mounting nuts

SPHERICAL BEARING

PENSKE P/N: MO-COM10T



MOUNTING SPACER

PENSKE P/N: BU-MX5CUP
2 Places both with larger diameter facing outward



SPACER

PENSKE P/N: DS-MX5CUP
Bump rubber support

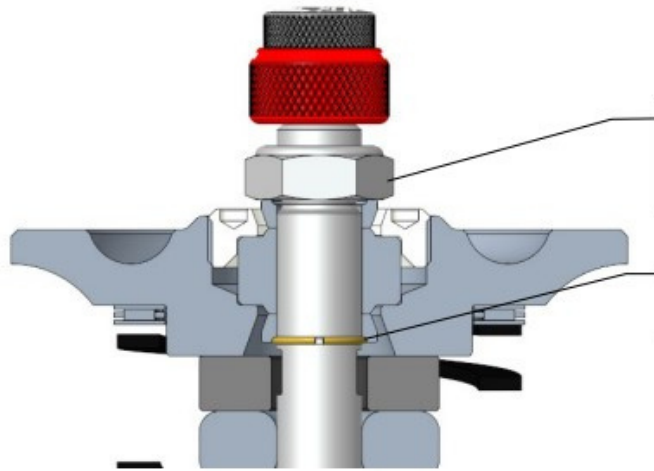
BEARING NUT

PENSKE P/N: NT-MX5CUP-MT
Torque: 50ft-lb
LOCTITE 243 (blue)

MAZDA MOTORSPORTS

By **PENSKE**

RACING SHOCKS



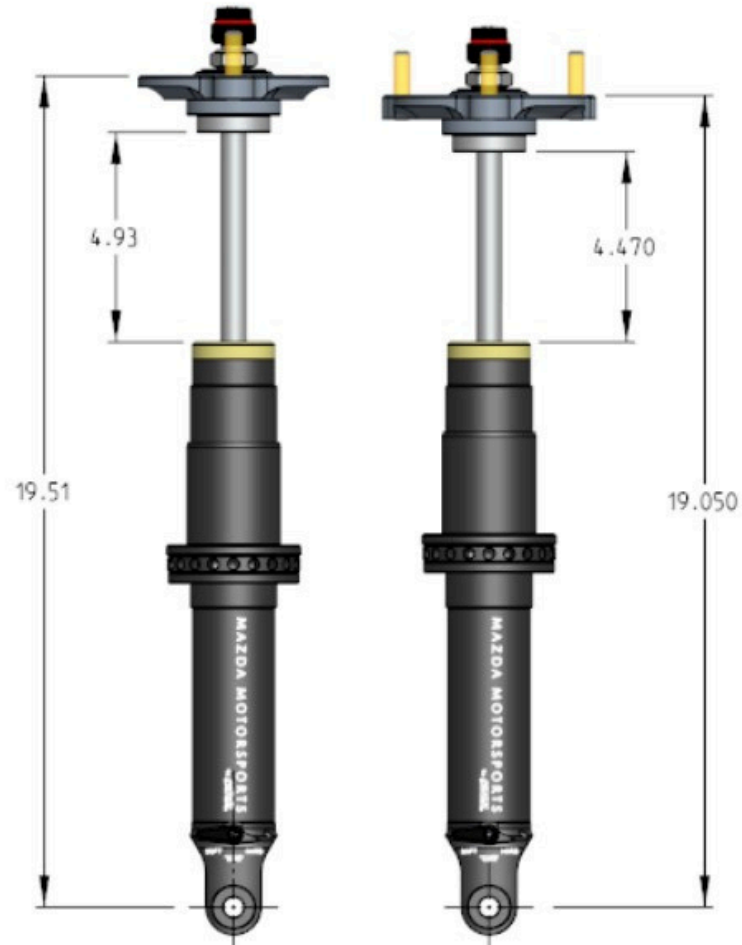
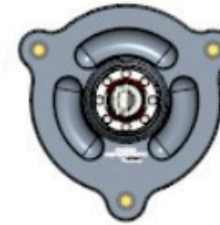
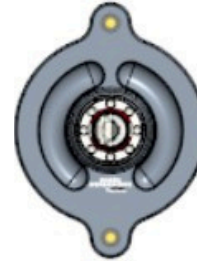
SHAFT LOCKNUT
PENSKE P/N: NT-4J-NYLOC
Torque: 40ft-lb

RETAINING RING
PENSKE P/N: RR-58

REAR

FRONT

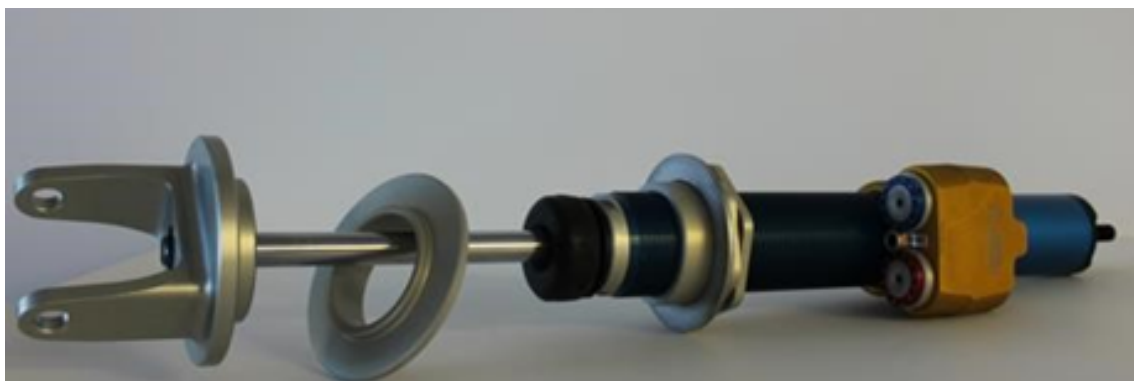
FRONT/REAR COMPARISON



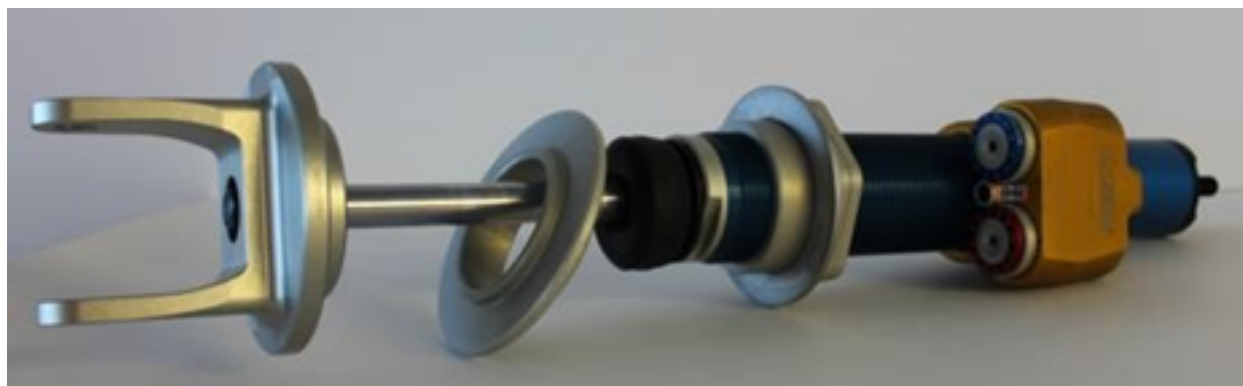


Sway Bar End Links - Front
0000-04-5495

NOTE: The front sway bar end link attachment washers' sequence, may be altered from how the car was delivered which are 4 in total per side of the car. The total number of four washers may not change per side, but their location (top to bottom or bottom to top) may. The homologated washer is still the only allowed washers



Damper - Rear 0000-04-5617, shown with intermediate spring perch and Bump Stop Mazda Part # F151-28-775B
0000-04-5617



Damper - Front 0000-04-5616, shown with intermediate spring perch and Bump Stop
0000-04-5616



Sway Bar End Links - Rear
0000-04-5496



Damper Rubber Mazda Part #
F151-28-775B



Damper Lock Nut Kit, 4 Upper, 2
Rear Lower Nuts
0000-04-5619



Damper Top Mount Kit
0000-04-5618



Rear Lower Damper Lock Nut,
0000-08-5116



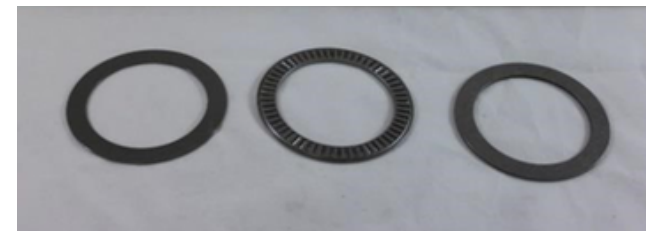
Rear Spring 300 2.25 ID X 7"
0000-04-5300-07



Front Spring 500 2.25 ID X 7"
0000-04-5500-07



Helper Spring
0000-04-9927



Torrington Bearing
0000-08-5119



Lug Nuts
0000-04-5906



MSI Wheel Studs
0000-04-5905



ARP Wheel Stud -
100-7719 (OPTIONAL)

15) WHEELS & TIRES



Tire: Michelin Pilot Sport Competition
Size: 20/61-17



SUPERSEDED by Michelin Pilot Sport Competition Tire
Tire: Michelin Pilot Sport Competition
Size: 20/61-17



Tire: MX-5C Michelin Competition
Wet 20/61-17 P2G

20/61-17

MICHELIN Pilot Sport Cup^T H1

Usage	Daytona Speedway - FRONT axle
Charge maxi / Max load (static + dynamic)	390 daN
Vitesse maxi / Max speed	240 km/h / 149 mph
Jante nominale / Nominal rim	7.5 J 17
Pression mini à froid / Minimum cold pressure	1.5 bar / 21.8 psi
Longueur du relais / Stint length	190 km / 118 mi

Nombre de relais / Number of stints	Pression mini à chaud / Minimum hot pressure (bar / psi)					
Carrossage / Camber	2.0 / 29.0	2.1 / 30.5	2.2 / 31.9	2.3 / 33.4	2.4 / 34.8	2.5 / 36.3
-2.81°	0	0	0	0	0	0
-2.51° to -2.8°	0	0	1	1	1	1
-2.21° to -2.5°	0	1	1	1	1	1
From -1.0° to -2.2°	0	1	1	1	1	1

MICHELIN Pilot Sport Cup^T H1

Usage	Daytona Speedway - REAR axle
Charge maxi / Max load (static + dynamic)	390 daN
Vitesse maxi / Max speed	240 km/h / 149 mph
Jante nominale / Nominal rim	7.5 J 17
Pression mini à froid / Minimum cold pressure	1.5 bar / 21.8 psi
Longueur du relais / Stint length	190 km / 118 mi

Nombre de relais / Number of stints	Pression mini à chaud / Minimum hot pressure (bar / psi)					
Carrossage / Camber	2.0 / 29.0	2.1 / 30.5	2.2 / 31.9	2.3 / 33.4	2.4 / 34.8	2.5 / 36.3
-3.81°	0	0	0	0	0	0
-3.51° to -3.8°	0	0	1	1	1	1
-3.21° to -3.5°	0	1	1	1	1	1
From -1.0° to -3.2°	0	1	1	1	1	1

MICHELIN Pilot Sport GT P2H

Usage	Daytona Speedway - FRONT axle
Charge maxi / Max load (static + dynamic)	390 daN
Vitesse maxi / Max speed	240 km/h / 149 mph
Jante nominale / Nominal rim	7.5 J 17
Pression mini à froid / Minimum cold pressure	1.6 bar / 23.2 psi
Longueur du relais / Stint length	190 km / 118 mi

Nombre de relais / Number of stints	Pression mini à chaud / Minimum hot pressure (bar / psi)					
Carrossage / Camber	2.0 / 29.0	2.1 / 30.5	2.2 / 31.9	2.3 / 33.4	2.4 / 34.8	2.5 / 36.3
-2.81°	0	0	0	0	0	0
-2.51° to -2.8°	0	0	0	0	1	1
-2.21° to -2.5°	0	0	0	1	1	1
From -1.0° to -2.2°	0	0	1	1	1	1

MICHELIN Pilot Sport GT P2H

Usage	Daytona Speedway - REAR axle
Charge maxi / Max load (static + dynamic)	390 daN
Vitesse maxi / Max speed	240 km/h / 149 mph
Jante nominale / Nominal rim	7.5 J 17
Pression mini à froid / Minimum cold pressure	1.6 bar / 23.2 psi
Longueur du relais / Stint length	190 km / 118 mi

Nombre de relais / Number of stints	Pression mini à chaud / Minimum hot pressure (bar / psi)					
Carrossage / Camber	2.0 / 29.0	2.1 / 30.5	2.2 / 31.9	2.3 / 33.4	2.4 / 34.8	2.5 / 36.3
-3.81°	0	0	0	0	0	0
-3.51° to -3.8°	0	0	0	0	1	1
-3.21° to -3.5°	0	0	0	1	1	1
From -1.0° to -3.2°	0	0	1	1	1	1

20/61-17

MICHELIN Pilot Sport Cup^T H1

Usage	Track without banking - FRONT axle
Charge maxi / Max load (static + dynamic)	390 daN
Vitesse maxi / Max speed	240 km/h / 149 mph
Jante nominale / Nominal rim	7.5 J 17
Pression mini à froid / Minimum cold pressure	1.5 bar / 21.8 psi
Longueur du relais / Stint length	190 km / 118 mi

Nombre de relais / Number of stints	Pression mini à chaud / Minimum hot pressure (bar / psi)					
Carrossage / Camber	1.9 / 27.6	2.0 / 29.0	2.1 / 30.5	2.2 / 31.9	2.3 / 33.4	2.4 / 34.8
-2.81°	0	0	0	0	0	0
-2.51° to -2.8°	0	1	1	1	1	1
-2.21° to -2.5°	0	1	1	1	1	1
From -1.0° to -2.2°	0	1	1	1	1	1

MICHELIN Pilot Sport Cup^T H1

Usage	Track without banking - REAR axle
Charge maxi / Max load (static + dynamic)	390 daN
Vitesse maxi / Max speed	240 km/h / 149 mph
Jante nominale / Nominal rim	7.5 J 17
Pression mini à froid / Minimum cold pressure	1.5 bar / 21.8 psi
Longueur du relais / Stint length	190 km / 118 mi

Nombre de relais / Number of stints	Pression mini à chaud / Minimum hot pressure (bar / psi)					
Carrossage / Camber	1.9 / 27.6	2.0 / 29.0	2.1 / 30.5	2.2 / 31.9	2.3 / 33.4	2.4 / 34.8
-3.81°	0	0	0	0	0	0
-3.51° to -3.8°	0	1	1	1	1	1
-3.21° to -3.5°	0	1	1	1	1	1
From -1.0° to -3.2°	0	1	1	1	1	1

MICHELIN Pilot Sport GT P2H

Usage	Track without banking - FRONT axle
Charge maxi / Max load (static + dynamic)	390 daN
Vitesse maxi / Max speed	240 km/h / 149 mph
Jante nominale / Nominal rim	7.5 J 17
Pression mini à froid / Minimum cold pressure	1.6 bar / 23.2 psi
Longueur du relais / Stint length	190 km / 118 mi

Nombre de relais / Number of stints	Pression mini à chaud / Minimum hot pressure (bar / psi)					
Carrossage / Camber	1.9 / 27.6	2.0 / 29.0	2.1 / 30.5	2.2 / 31.9	2.3 / 33.4	2.4 / 34.8
-2.81°	0	0	0	0	0	0
-2.51° to -2.8°	0	0	0	1	1	1
-2.21° to -2.5°	0	0	0	1	1	1
From -1.0° to -2.2°	0	0	0	1	1	1

MICHELIN Pilot Sport GT P2H

Usage	Track without banking - REAR axle
Charge maxi / Max load (static + dynamic)	390 daN
Vitesse maxi / Max speed	240 km/h / 149 mph
Jante nominale / Nominal rim	7.5 J 17
Pression mini à froid / Minimum cold pressure	1.6 bar / 23.2 psi
Longueur du relais / Stint length	190 km / 118 mi

Nombre de relais / Number of stints	Pression mini à chaud / Minimum hot pressure (bar / psi)					
Carrossage / Camber	1.9 / 27.6	2.0 / 29.0	2.1 / 30.5	2.2 / 31.9	2.3 / 33.4	2.4 / 34.8
-3.81°	0	0	0	0	0	0
-3.51° to -3.8°	0	0	0	1	1	1
-3.21° to -3.5°	0	0	0	1	1	1
From -1.0° to -3.2°	0	0	0	1	1	1



Rays 17x7-1/2 x 40 Wheel, MX-5C
Face
0000-04-5806



Rays 17x7-1/2 x 40 Wheel, MX-5C
Inside
0000-04-5806



Rays 17x7-1/2 x 40 Wheel, MX-5C
0000-04-5806

16) SADEV GEARBOX



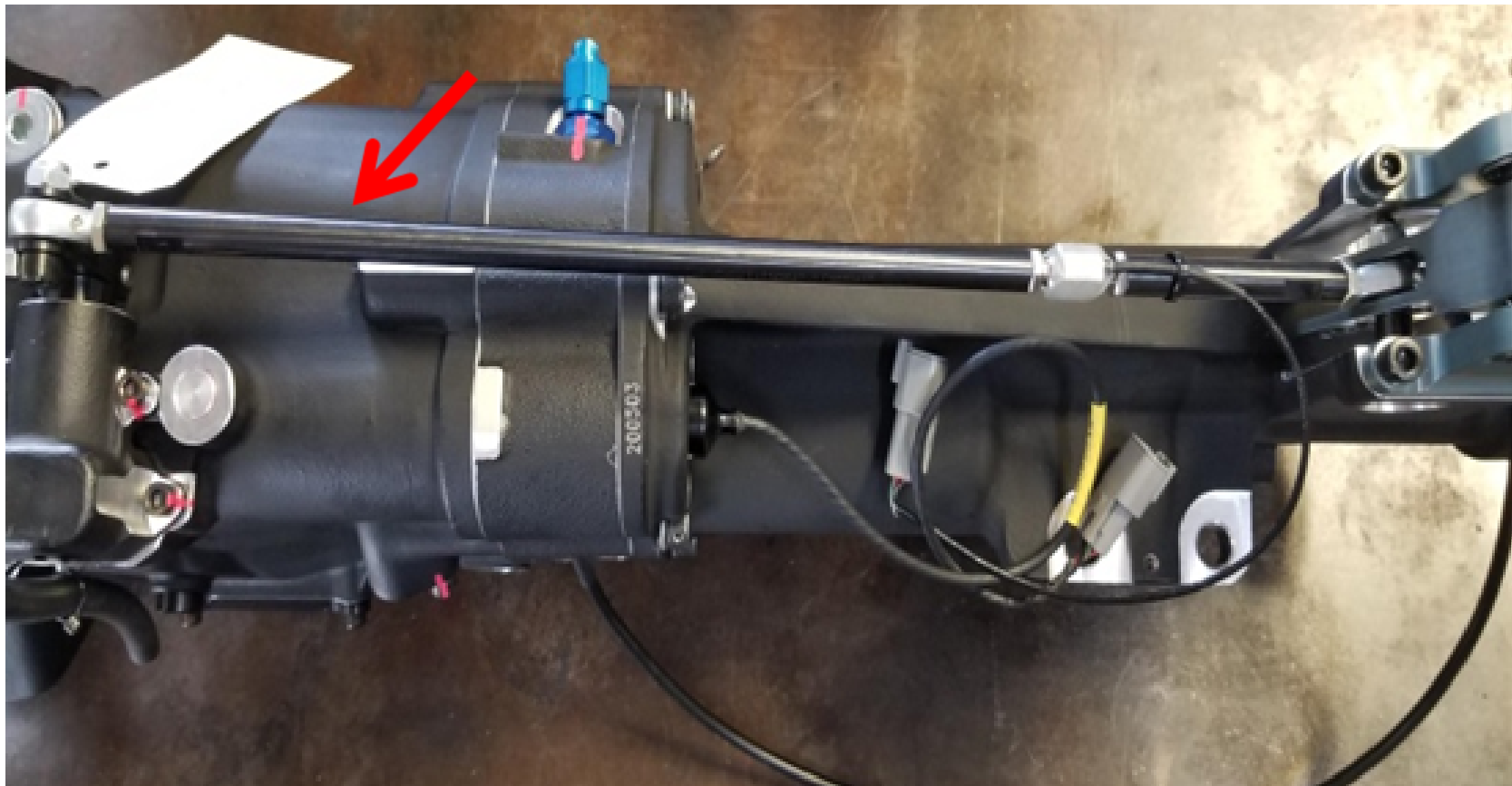
SADEV Gearbox
0000-02-5901-SD



Banjo Fitting Kit-inline filter
0000-02-5902-BJ



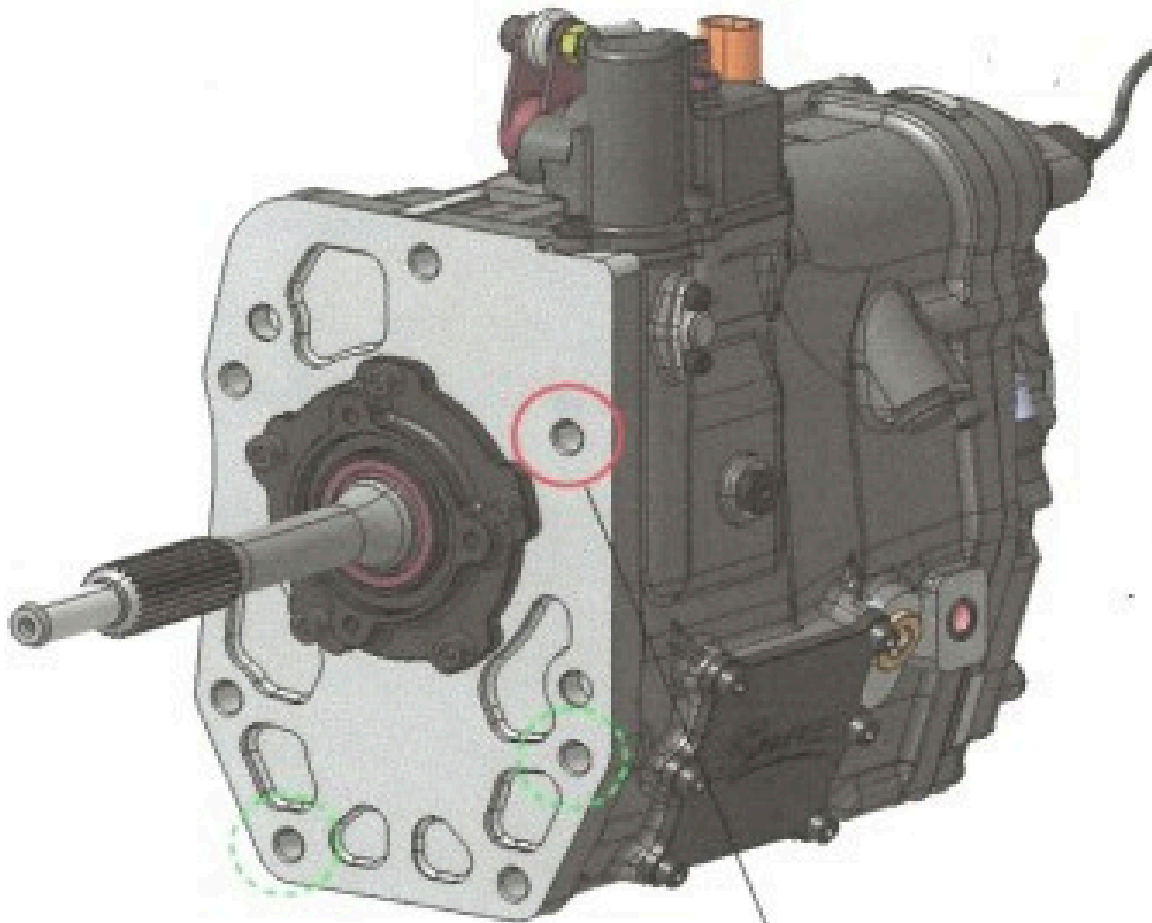
Wiring for SADEV -
0000-10-5916



Shift Rod with Load Cell
0000-02-5903

GEAR LIST	FINAL DRIVE	19/22
------------------	--------------------	--------------

GEARS	1st	14/29
	2nd	17/27
	3rd	21/27
	4th	21/23
	5th	25/24
	6th	22/19



Ring and Pinion - 3.455

Careful !
 The depth of this thread
 is smaller than others of
 the mounting face.
 Use a screw shorter



The only Homologated Shift Linkage position, is the second mounting hole from the top, as pictured above. No exceptions.



Drive Shaft
0000-02-5902



DriveShaft Bolt Top Hat Kit
0000-02-5902-BT



OEM PRESSURE PLATE - PE31-16-
410 (ND.1& ND.2)



ACT CLUTCH DISC - 0000-02-
5438-SS
(ND.2 SADEV ONLY)



OEM RELEASE BEARING - LFO1-16-510 (ND.1 & ND.2)

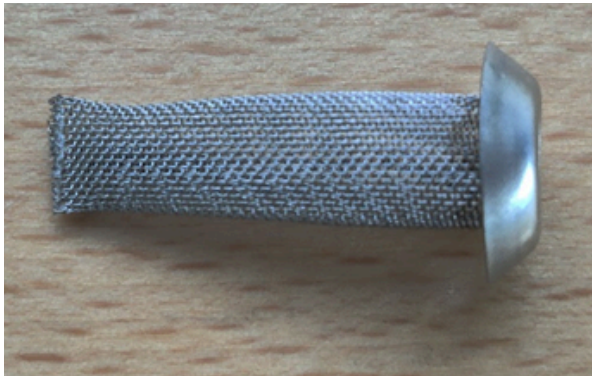


3/8" 90 Deg. NPT to -8 AN (GearBox Pump) 0000-08-D802 (Optional)



-8 AN Male to 22 mm Male (GB Cooler) 0000-08-5014

Can be used for -8 Line Update



-8 AN Filter 0000-08-D804 (Optional)



-8 AN Female to -8 AN Male with 1/8 Sensor Hole 0000-08-D805 (Optional)



-6 AN Female to -8 Male AN (GearBox) 0000-08-D801 (Optional)



-8 GB Pump Out to GB Cooler in (FLIS - 046) 0000-08-D810 37" (Optional)



-8 GB Cooler Out to GB In (FLIS - 047) 0000-08-D811 100" (Optional)



-8 GB Out to GB Pump In (FLIS - 045) 0000-08-D809 48" (Optional)

Differential & Gearbox Hose Kit Update

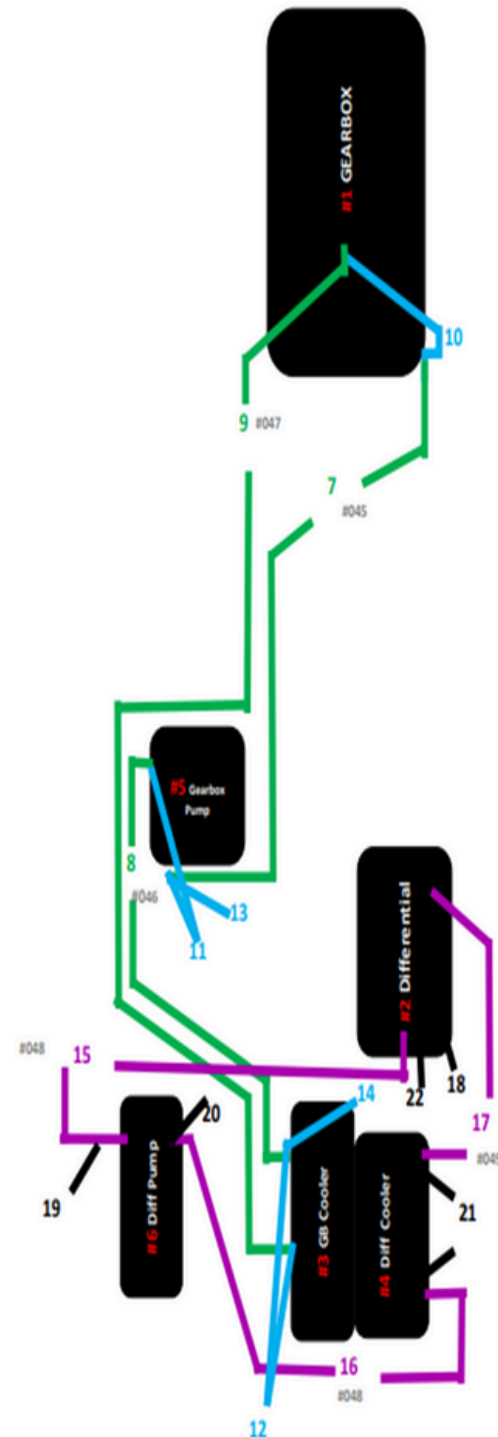
#	Description
1	Gearbox (GB)
2	Differential (Diff)
3	GB Cooler
4	Diff Cooler
5	GB Pump
6	Diff Pump

GearBox Hoses		Part #	Length	Fitting	Fitting
7	GB Out to GB Pump In (FLIS - 045)	0000-08-D809	48"	ST	ST
8	GB Pump Out to GB Cooler In (FLIS - 046)	0000-08-D810	37"	ST	90
9	GB Cooler Out to GB In (FLIS - 047)	0000-08-D811	100"	90	90SW

GearBox Fittings		Part #	QTY	Size	Size
10	-6 AN Female to -8 Male AN (GB)	0000-08-D801	2	-6	-8
11	3/8" 90 Deg. NPT to -8 AN (GB Pump)	0000-08-D802	2	3/8" NPT	-8
12	-8 AN Male to 22mm Male (GB Cooler)	0000-08-5014	2	-8	22mm
13	-8 AN Filter	0000-08-D804	1	-8	
14	-8 AN Female to -8 AN Male with 1/8 Sensor Hole	0000-08-D805	1	-8	-8

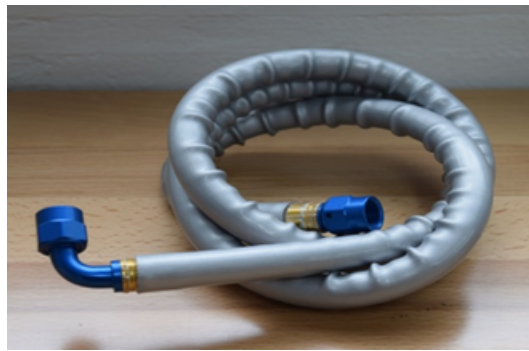
Differential Hoses		Part #	Length	Fitting	Fitting
15	Diff out to Diff Pump In (FLIS - 048)	0000-08-D812	24"	45	90SW
16	Diff Pump Out to Diff Cooler In (FLIS - 048)	0000-08-D812	24"	45	90SW
17	Diff Cooler Out to Diff In (FLIS - 049)	0000-08-D813	9"	45	90SW

Differential Fittings		Part #	QTY	Size	Size
18	-8 AN Male to 18mm Male (Diff Out)	0000-08-D806	1	-8	18mm
19	3/8" NPT Male to -8 AN Male with 1/8 Sensor hole (Diff Pump)	0000-08-D807	1	3/8" NPT	-8
20	3/8" NPT Male to -8 AN Male (Diff Pump) - (FBM5007)	0000-08-D808	1	3/8" NPT	-8
21	-8 AN Male to 22mm Male (Diff Cooler) - (22-M22AN00-SE)	0000-08-5014	2	-8	22mm
22	-8 AN Filter	0000-08-D804	1	-8	





- 6 Gearbox to Filter Hose
0000-02-5902-L1



- 6 Gearbox to Pump Hose
0000-02-5902-L2



- 6 Oil Line, Trans-Filter to Cooler-
ND2
0000-08-D211



- 6 Oil Line, Trans-Cooler to Pump-
ND2
0000-08-D212

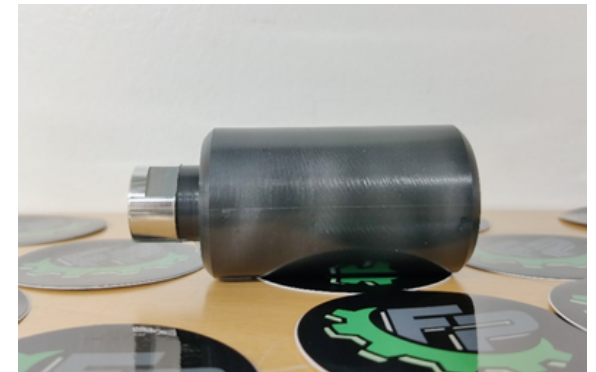
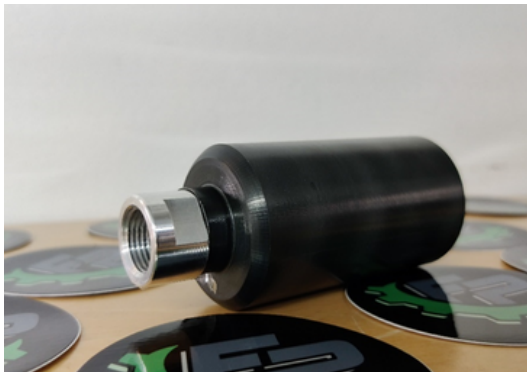


90* -6 Male to 3/8 NPT Pipe Male -
Trans Pump
0000-08-5125

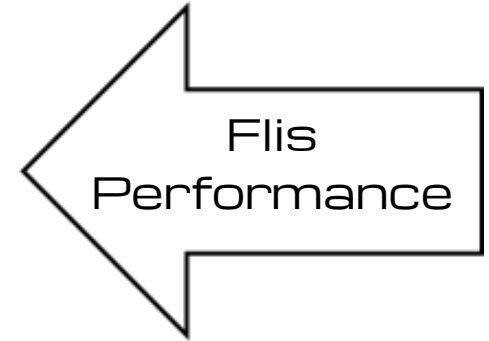
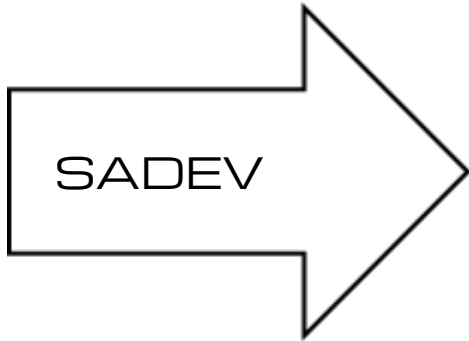


Diff & Trans Oil Filter Housing (one
each) 0000-02-5606
Please reference Mazda MX-5 Cup
Car Technical Service Bulletin
#2021-04-23 #2
Optional: Replacement and/or
Removal of Differential and Gearbox
Filters
0000-08-5606

ND2-TSB-2022-12-21 #B - Flis Performance
Updated SADEV Heat Resistant Shift Knob - Optional



ND2 TSB 2020-08-19 Global MX-5 Cup SADEV Shift Knob Alternative
OPTIONAL - Superseded By Heat Resistant Shift Knob 2022-12-21

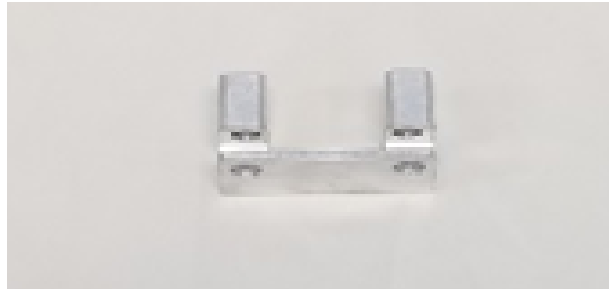


Discontinued





Slave Cylinder -
0000-02-5116



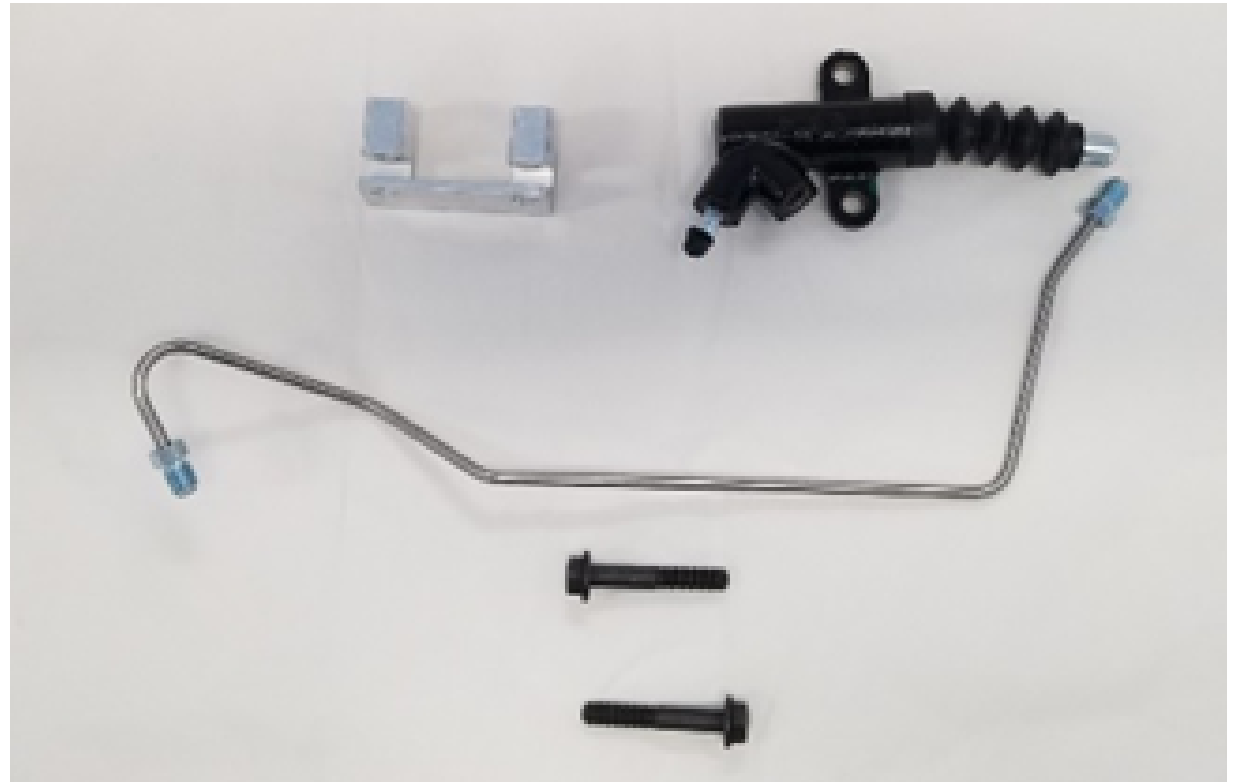
Slave Cylinder Bracket -
0000-02-5116-BK



Slave Cylinder Line -
0000-02-5116-LN



Slave Cylinder Hardware -
0000-02-5116-HD



Slave Cylinder Kit -
0000-02-5116-KT

17) TRANSMISSION & CLUTCH



Transmission Stud
0000-02-STUD-GM
NON-SADEV



Banjo Adapter
0000-08-5121-
NON-SADEV



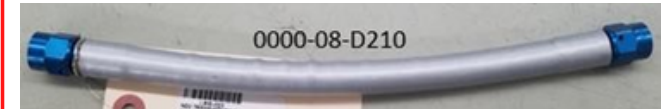
Banjo Bolt
0000-08-5122
NON-SADEV



Banjo Bolts Kit (Crush Washer for
Banjo Bolts and Cooler Lines) 0000-
08-5123
NON-SADEV



-6 Male to -8 Female Adaptor
0000-08-5124
NON-SADEV



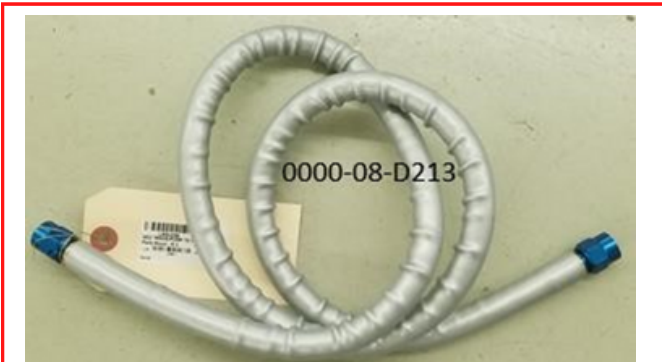
-6 Oil Line, Trans-Housing to Filter-
ND2
0000-08-D210 -
NON-SADEV



Clutch kit 0000-02-5006-SS
NON-SADEV



Clutch kit 0000-02-5006-SS
NON-SADEV



-6 Oil Line, Trans-Pump to Housing-
ND2
0000-08-D213- NON-SADEV