

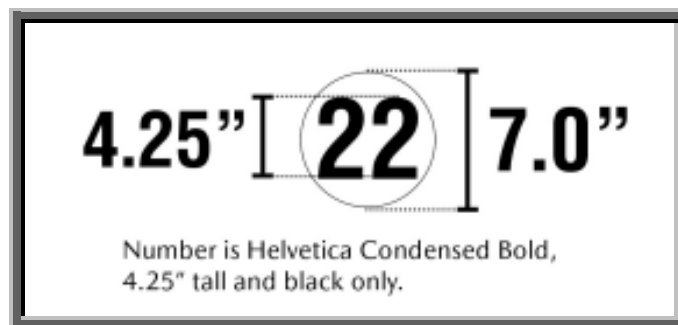
Mazda MX-5 Cup Competitor Information Bulletin #2022-01-13 #1

2022 Mazda MX-5 Cup Information

This CIB describes: Information to assist teams in preparing for the 2022 season regarding the following:

Rear Number Board, Battery Tray Installation Repair

Rear Number Board: Please check the style guide in the 2022 IMSA Sporting Regulations found in Attachment 5, for the New Rear Number Board required this season. Number is Helvetica Condensed Bold, 4.25" tall and black only. Note that the placement of the number has been moved to the left side. The Rear Number Board will be supplied by Andersen Promotions, and the 4.25" Numbers must be supplied by competitors.



Battery Tray Installation Repair: We have seen several installations failures of battery trays. If your battery tray is not securely mounted, please contact Flis Performance for guidance in repairing and improving the attachment of your battery.

***BOSCH Technical Support:** * Flis Performance provides technical support and troubleshooting guidance for the Bosch Engine Management System and related sensors for the MX-5 Cup Series.

****Be advised that all Bosch inquires must be directed to Flis Performance and not EMS (Ed Senf).****

For any questions or concerns, please contact us:

Flis Performance

Ashli Richardson

386-256-7021

ashli@flisperformance.com