



Mazda MX-5 Cup Dual Brake Duct Kit Installation

Kit Includes:

- **Backing Plate Flange Duct**
- **Two Button Hole Bolts**
- **Two nuts**
- **Fog light Dual Duct**
- **Two clamps**
- **Two longer Brake Ducts hoses**

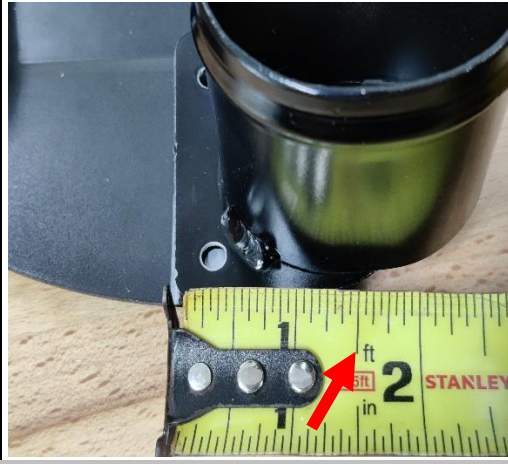
SAFETY FIRST – Follow all Shop Safety Standards

1. **Remove Single Duct Hose and clamps (Save clamps to reuse)**
2. **Remove Fog Light Single Duct (Save hardware to reuse)**
3. **Replace Fog Light Dual Duct with the same hardware from the Single Duct – Picture #1**
4. **Measure 1 ½ inch from bottom leading edge of the caliper backing plate and mark (sliver sharpie works well) – Picture #2**
5. **Line up Backing Plate Flange duct to the mark made on the Caliper Backing Plate, then mark mounting holes and arc inside the duct. Picture #3**
6. **Drill out the two mounting holes with a 3/16 drill bit**
7. **Mount Backing plate flange duct to Caliper Backing plate with supplied hardware. The button head will need to be placed outside (facing the rotor). The nut will be installed facing the inside. – Picture #4**
8. **Use 1 ½ inch hole saw to clearance out the inside of the duct. Debur and clean area. – Picture #5**
9. **Install Brake Duct hoses provided, using clamps and mount securely with zip ties– Picture #6**

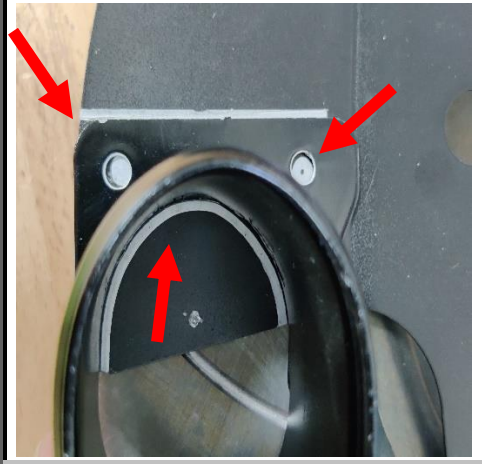
Picture #1



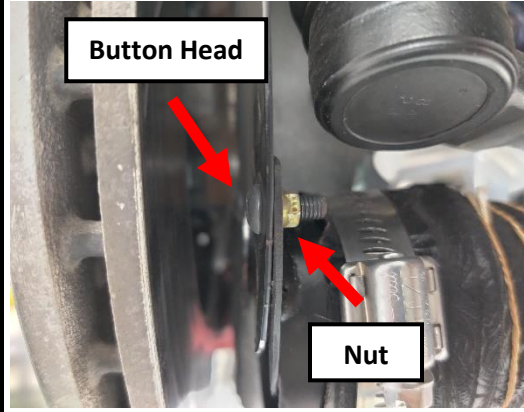
Picture #2



Picture #3



Picture #4



Picture #5



Picture #6

